

197425

CERTIFIED LAND OR NEW RECORDATION

DESCRIPTION OF CORNER EVIDENCE FOUND, AND ORIGINAL RECORD (IF KNOWN)

At the Section Corner for Sections 8, 9, 16, and 17, T.19N., R.19W. find: No evidence of original corner stone, destroyed by county road.

Record: A Granite stone, 14"x12"x8", 10" in the ground, for Cor. of Secs. 8, 9, 16, and 17, marked with 4 notches, each on S. and E. edges; and a mound of stone, 2' base, 1 1/2' high, W. of cor. No timber.

DESCRIPTION OF MONUMENT AND ACCESSORIES ESTABLISHED TO PERPETUATE THE ORIGINAL LOCATION OF THIS CORNER:

Date of work: 10-70

At center of intersection of county road, I set a 3/4"x18" galv. pipe, 6" underground for Cor. of Secs. 8, 9, 16, and 17, from which I set two RP's:

A tack in R.R. tie post bears N.44°00'E., 33.39'

An Irrigation headgate lift rod bears S. 68°00'W., 43.58'

SKETCH, WITH COURSE AND DISTANCE TO ADJACENT CORNERS IF DETERMINED IN THIS SURVEY. (MAY SKETCH OR PASTE REPRODUCTION ON REVERSE SIDE.)

A set galv. pipe for the NW Cor. of Sec. 17, can be located, N.89°41.4'W., 5332.61 ft. distance of the above Corner. Note: No evidence of recent survey marks were found in area of the above Corner.

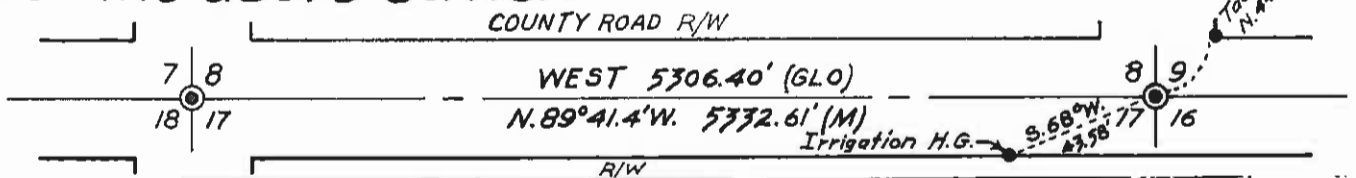
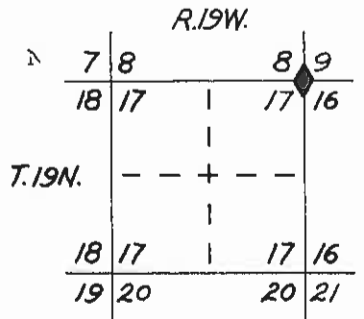


DIAGRAM C.



Surveyor See

I, Christopher Balstad Jr. certify that the information shown herein is true and correct. Christopher Balstad Jr. Signature of Ground Party Chief

I, Christopher Balstad Jr. certify that I have carefully performed or reviewed the work done on the diagrammed corner as reported on this recordation form and approve the same. Christopher Balstad Jr. Signature of Surveyor

◆ = Corner record.

33225 Registration Number

Clerk of County of Lake

This corner record was filed for record on the 1 day of March 1971, was noted on the books at 3:14 PM.

Signature No. C-138, in book No. 197425 CLERK & RECORDER

Wilhelmina Laughlin County Official

Printed by MARDINE

Cross Index No. J-9 T. 19 N. R. 19 W