

CERTIFIED LAND CORNER RECORDATION

219004

LAKE COUNTY

DESCRIPTION OF CORNER EVIDENCE FOUND, AND ORIGINAL RECORD (IF KNOWN)

First Original Record:

10.00 Set a sand stone, 14x8x5 ins., 10 ins. in the ground, for cor. of secs. 9, 10, 15, and 16, marked with 4 notches on S. and 3 notches on E. edge; from which

- A pine, 24 ins. dia., bears N.17°E., 35 lks. dist., marked T 19 NR 19 W S 10 B T.
- A pine, 28 ins., dia., bears S.70°E., 39 lks. dist., marked T 19 NR 19 W S 15 B T.
- A pine, 30 ins. dia., bears S.75°W., 58 lks. dist., marked T 19 NR 19 W S 16 B T.
- A pine, 18 ins. dia., bears N.74°W., 65 lks. dist., marked T 19 NR 19 W S 9 B T.

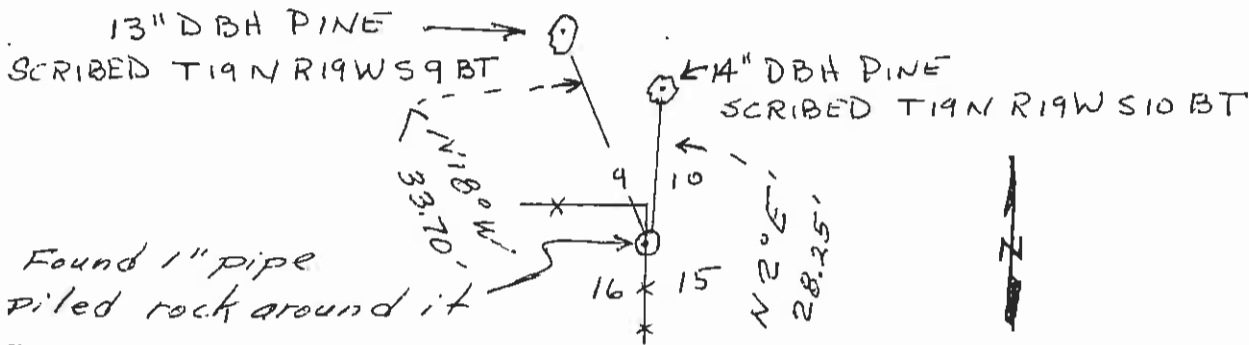
found none of the above - all destroyed by logging. However, I did find a 1" pipe, origin unknown, which I tied to 1/4 corners N and S.

charred stump fits this corner location for the Northeast B T.

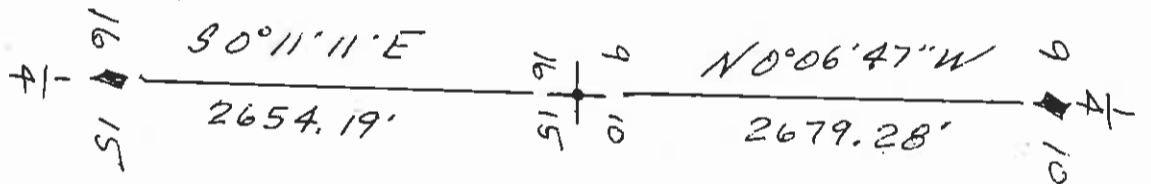
I scribed two bearing trees as shown below.

DESCRIPTION OF MONUMENT AND ACCESSORIES ESTABLISHED TO PERPETUATE THE ORIGINAL LOCATION OF THIS CORNER:

Date of work: 21 June 74



SKETCH, WITH COURSE AND DISTANCE TO ADJACENT CORNERS IF DETERMINED IN THIS SURVEY. (MAY SKETCH OR PASTE REPRODUCTION ON REVERSE SIDE.)



Surveyor's Seal



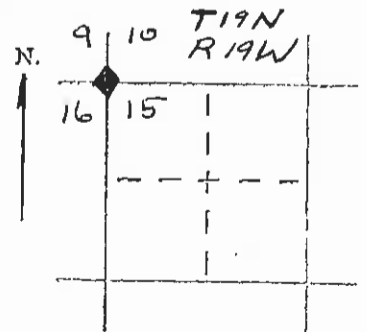
I, _____ certify that the information shown herein is true and correct.

Signature of Ground Party Chief

I, Christopher Balstad Jr. certify that I have carefully performed or reviewed the work done on the diagrammed corner as reported on this recordation form and approve the same.

Signature of Christopher Balstad Jr. Signature of Surveyor

DIAGRAM OF CORNER:



◆ == Corner recorded on the sheet

33225 Registration Number

Office of Clerk and Recorder, County of Lake

"corner record" was filed for record on the OCT 2 1974 day of 1974

Recorded page No. C-528, in book No. 528

ETHEL M. HARDING

County Official

Cross Index No. J-13 T. 19 N. R. 19 W. Mer.