

- INSTRUCTIONS
1. Original and/or subsequent record used to evaluate the corner position.
 2. Description of evidence found, note discrepancies in the record, state method of establishing, obliterated corners.
 3. Description of monument and accessories set to perpetuate the corner position.
 4. Sketch of corner, show all pertinent data which can best be shown in a sketch example, corner marking, topography ties, position of accessories, etc.
 5. Certification must be signed and sealed by Land Surveyor registered in the State of Montana.
 6. Fill in Cross Index & Section Diagram at bottom of sheet.

61- 404868

CERTIFIED CORNER RECORDATION

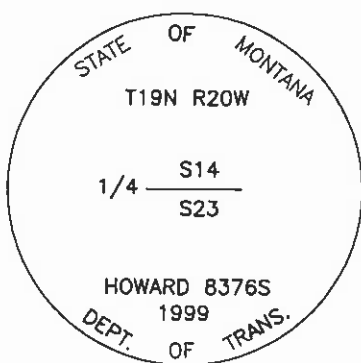
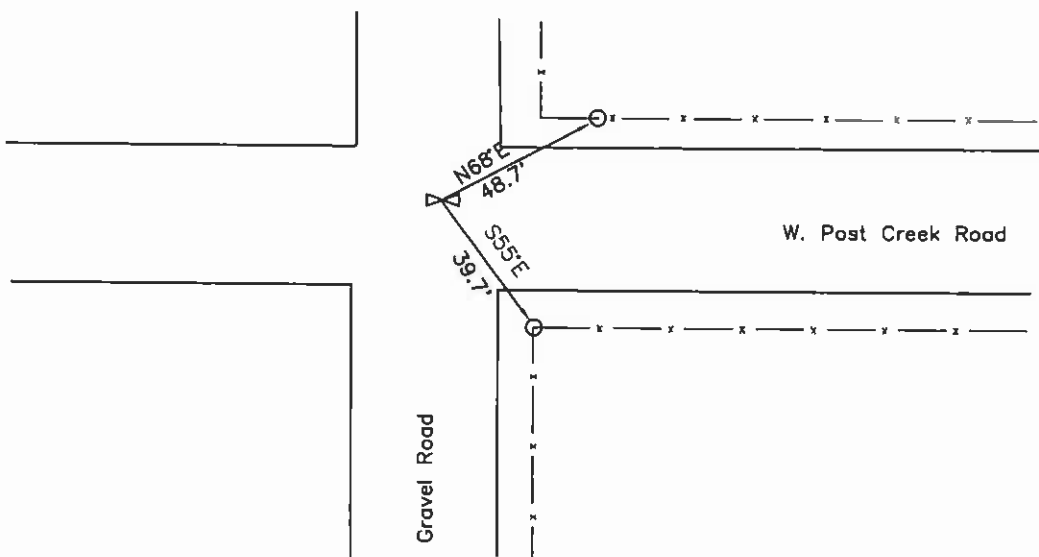
Corner: 1/4 Section Corner 14 & 23 T. 19N R. 20W P.M.M. Lake County

ORIGINAL RECORD: (1904 G.L.O.) Set a sandstone, 14x8x5 ins., 9 ins. in the ground marked 1/4 on N. face; and raise a mound of earth, 3 1/2 ft. base, 1 1/2 ft. high, N. of corner.

SUBSEQUENT RECORD: None found.

EVIDENCE FOUND: Found a 5/8" rebar 3.7' N and 0.5'E of the intersection of W. Post Creek Rd. and another road going N-S.

PERPETUATION: Set a 3 1/4" MDT aluminum cap on a 30" aluminum pipe in the position of the rebar. The cap is marked as shown in the sketch. From which;
 A fence post bears N68°E, 48.7' distant; with a MARLS tag.
 A fence corner post bears S55°E, 39.7' distant; with a MARLS tag.



SKETCH OF CORNER

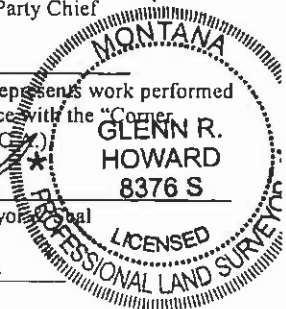
CERTIFICATION

I, Joseph Bauch
 certify the information shown herein is true and correct.
Joseph Bauch
 Signature Ground Party Chief

I, Glenn R. Howard
 certify that this Corner Record correctly represents work performed by me or under my direction in compliance with the "Corner Recordation Act" (70-22-101, et seq., M.C.A.)
Glenn R. Howard
 Signature of Surveyor

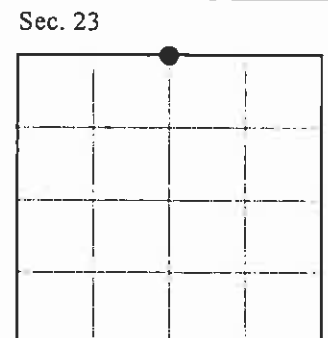
Date: 12-16-99 Reg. No. 8376 S

Employer: DJ&A, P.C.



Office of Clerk and Recorder, County of Lake. This "corner record" was filed for record on DEC 17 1999 at 10:25 A.M. was noted on the cross index plat and is assigned page No. 404868, in book No. C-2317 RUTH E. HODGES *by: [Signature] Munic dep*
 County Official

Cross Index No. N-19 T. 19N R. 20W P.M.M.



•- corner this sheet

NC