

- INSTRUCTIONS
1. Original and/or subsequent record used to evaluate the corner position.
 2. Description of evidence found. Note discrepancies in the record, state method of establishing location of obliterated corners.
 3. Description of monument and accessories set to perpetuate the corner position.
 4. Sketch of corner, show all pertinent data which can best be shown in a sketch example, corner marking, topography ties, position of accessories, etc.
 5. Certification must be signed and sealed by Land Surveyor registered in the State of Montana.
 6. Fill in Cross Index & Section Diagram at bottom of sheet.

61-404865

CERTIFIED CORNER RECORDATION

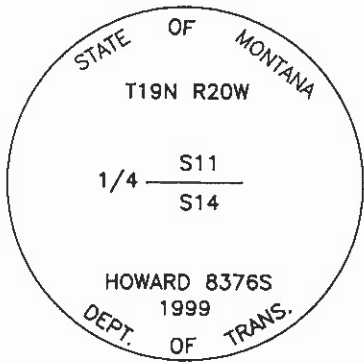
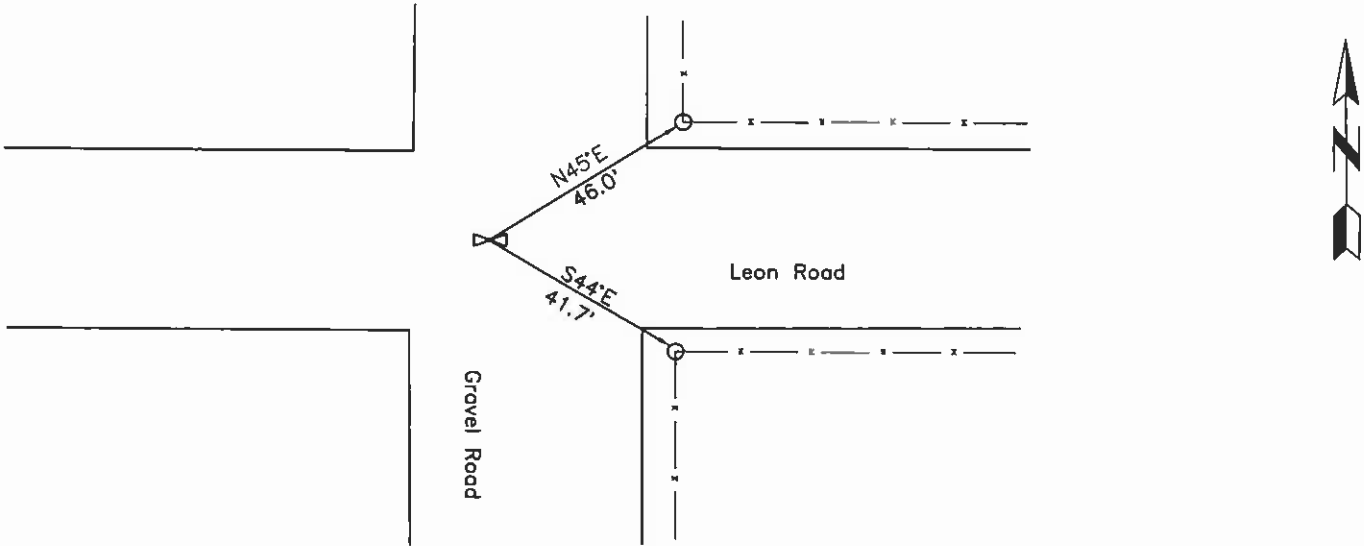
Corner: 1/4 Section Corner 11 & 14 T. 19N R. 20W P.M.M. Lake County

ORIGINAL RECORD: (1905 G.L.O.) Set a sandstone, 16x9x5 ins., 5 ins. in the ground marked 1/4 on N. face; and raise a mound of stone, 2 ft. base, 1 1/2 ft. high, N. of corner.

SUBSEQUENT RECORD: See corner recordation #249531, set a 2 1/2" alum. cap on a pipe at intersection of a gravel road N & S and Leon Road E & W.

EVIDENCE FOUND: Found a 2 1/2" alum. cap on a pipe at intersection of a gravel road N & S and Leon Road E & W.

PERPETUATION: Set a 3 1/4" MDT aluminum cap on a 30" aluminum pipe in the position of the pipe. The cap is marked as shown in the sketch. From which;
 A fence corner post bears S44°E, 41.7' distant; with a MARLS tag.
 A fence corner post bears N45°E, 46.0' distant; with a MARLS tag.



SKETCH OF CORNER

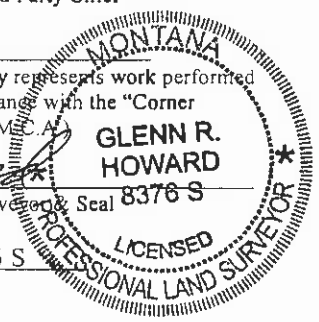
CERTIFICATION

I, Joseph Bauch
 certify the information shown herein is true and correct.
Joseph Bauch
 Signature Ground Party Chief

I, Glenn R. Howard
 certify that this Corner Record correctly represents work performed by me or under my direction in compliance with the "Corner Recordation Act" (70-22-101, et seq., M.C.A.)
Glenn R. Howard
 Signature of Surveyor Seal 8376-S

Date: 12-16-99 Reg. No. 8376 S

Employer: DJ&A, P.C.



Office of Clerk and Recorder, County of Lake. This "corner

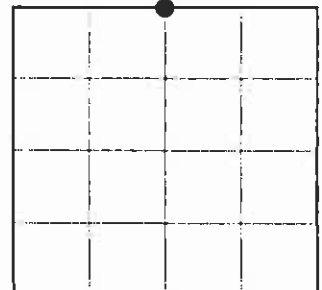
record" was filed for record on DEC 17 1999 10:22 A.M.

was noted on the cross index plat and is assigned page No. 404865, in

Book No. C-2314 RUTH E. HODGES County Official *By: [Signature]*

Cross Index No. J-19 T. 19N R. 20W PMM

Sec. 14



•- corner this sheet

NC