

- INSTRUCTIONS
1. Original and/or subsequent used to evaluate the corner position
  2. Description of evidence to note discrepancies in the record, state method of establishing corners.
  3. Description of monument and accessories set to perpetuate the corner position.
  4. Sketch of corner, show all pertinent data which can best be shown in a sketch example, corner marking, topography ties, position of accessories, etc.
  5. Certification must be signed and sealed by Land Surveyor registered in the State of Montana
  6. Fill in Cross Index & Section Diagram at bottom of sheet

battered

61-404870

## CERTIFIED CORNER RECORDATION

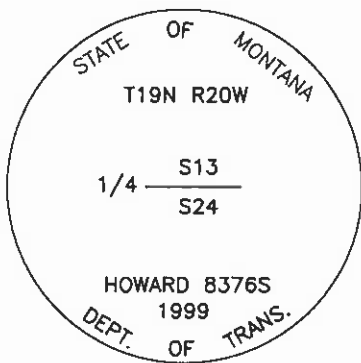
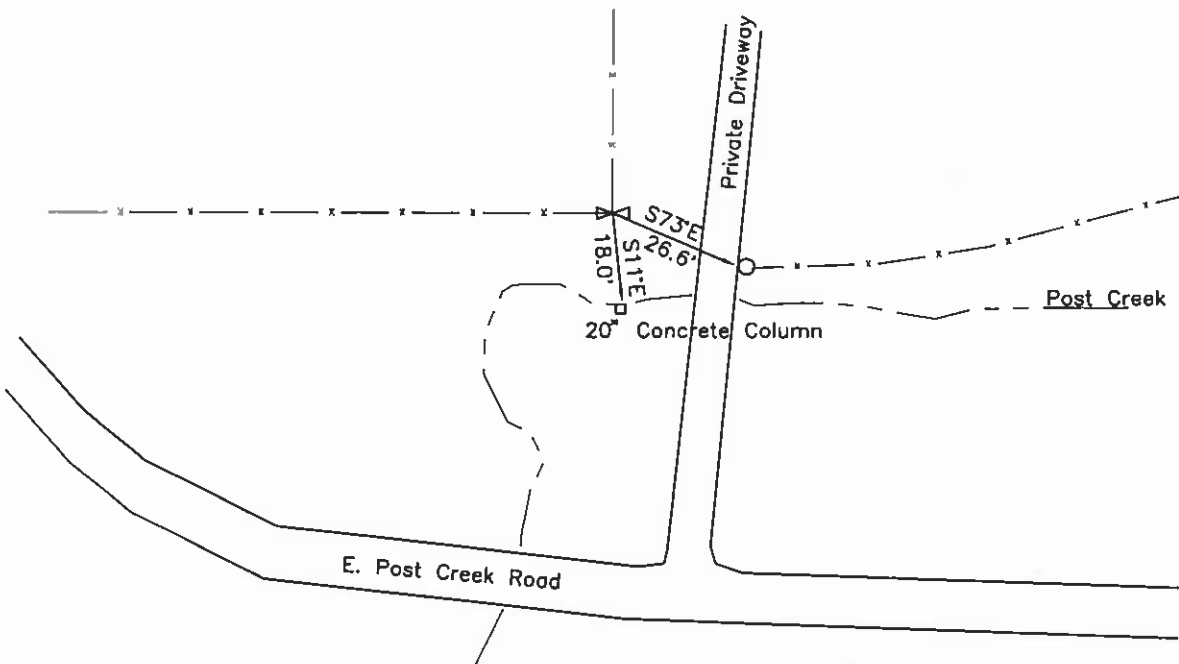
Corner: 1/4 Section Corner 13 & 24 T. 19N R. 20W P.M.M. Lake County

**ORIGINAL RECORD:** (1904 G.L.O.) Set a sandstone, 15x8x6 ins., 10 ins. in the ground marked 1/4 on N. face; from which:  
 A pine, 36 ins. diam., bears N9°W, 249 lks. dist., marked "1/4 S13 BT"  
 A cedar, 4 ins. diam., bears S4°E, 151 lks. dist., marked "1/4 S24 BT"

**SUBSEQUENT RECORD:** See corner recordation #199104, found stone and pipe.

**EVIDENCE FOUND:** Found a 14"x7"x8" stone with 1/4 on N. face and a 1 1/2" pipe alongside.

**PERPETUATION:** Set a 3 1/4" MDT aluminum cap on a 30" aluminum pipe in the position of the stone & pipe with the stone buried alongside. The cap is marked as shown in the sketch. From which;  
 A 20"x20" concrete column bears S11°E, 28.8' distant.  
 A 6" wooden gate post bears S73°E, 26.6' distant; with a MARLS tag.



SKETCH OF CORNER

CERTIFICATION

I, Joseph Bauch  
 certify the information shown herein is true and correct.

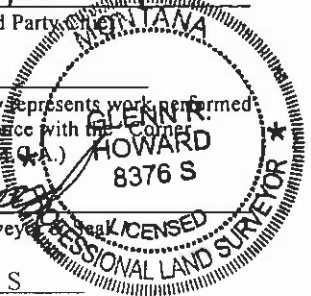
*Joseph Bauch*  
 Signature of Ground Party

I, Glenn R. Howard  
 certify that this Corner Record correctly represents work performed by me or under my direction in compliance with the "Corner Recordation Act" (70-22-101, et seq., M.C.A.)

*Glenn R. Howard*  
 Signature of Surveyor

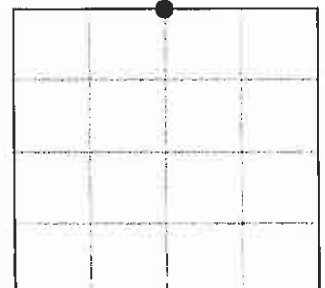
Date: 12-16-99 Reg. No. 8376 S

Employer: DJ&A, P.C.



Office of Clerk and Recorder, County of Lake. This "corner record" was filed for record on DEC 17 1999 at 10.28 A.M. was noted on the cross index plat and is assigned page No. 404870 in book No. C-2319 by RUTH E. HODGES County Official. Cross Index No. N-23 T. 19N R. 20W PMM

Sec. 24



•- corner this sheet

NC