

INSTRUCTIONS

1. Original and/or subsequent record used to evaluate the corner position.
2. Description of evidence, note discrepancies in the record, state method of establishing corners.
3. Description of monument and accessories set to perpetuate the corner position.
4. Sketch of corner, show all pertinent data which can best be shown in a sketch example, corner marking, topography ties, position of accessories, etc.
5. Certification must be signed and sealed by Land Surveyor registered in the State of Montana.
6. Fill in Cross Index & Section Diagram at bottom of sheet

61- 404863

CERTIFIED CORNER RECORDATION

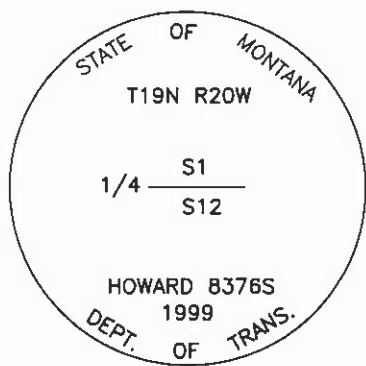
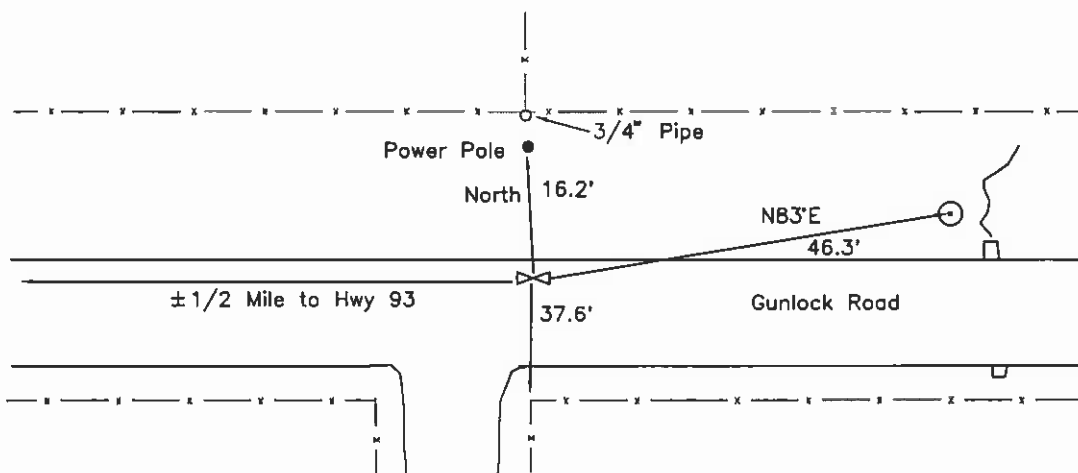
Corner: 1/4 Section Corner 1 & 12 T. 19N R. 20W P.M.M. Lake County

ORIGINAL RECORD: (1905 G.L.O.) Set a sandstone, 18x10x6 ins., 12 ins. in the ground marked 1/4 on N. face; dig pits 18x18x12 ins., E. and W. of stone, 3 ft. dist.; and raise a mound of earth, 3 1/2 ft. base, 1 1/2 ft. high, N. of corner.

SUBSEQUENT RECORD: See corner recordation #191265, set a 3/4" Iron pipe as an RM to the true position 21.70' South in Gunlock Road also being a 3/4" iron pipe, positioned from fences and best found evidence.

EVIDENCE FOUND: Found a 3/4" pipe in North edge of Gunlock Road.

PERPETUATION: Set a 3 1/4" MDT aluminum cap on a 30" aluminum pipe 0.3' below the road surface in the position of the pipe, with the pipe buried inside. The cap is marked as shown in the sketch. From which:
 A power pole bears N0°E, 16.2' distant; with a MARLS tag.
 A center bolt of an irrigation screw gate bears N83°E, 46.3' distant.



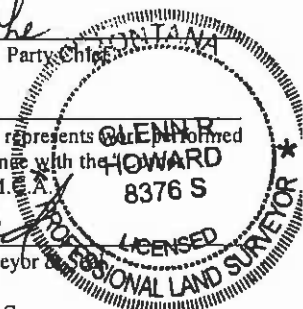
SKETCH OF CORNER

CERTIFICATION
 I, Kurt Luebke (13237LSI)
 certify the information shown herein is true and correct.

Kurt Luebke
 Signature Ground Party Chief

I, Glenn R. Howard
 certify that this Corner Record correctly represents the information furnished by me or under my direction in compliance with the "Montana Corner Recordation Act" (70-22-101, et seq., M.C.A.)

Glenn R. Howard
 Signature of Surveyor

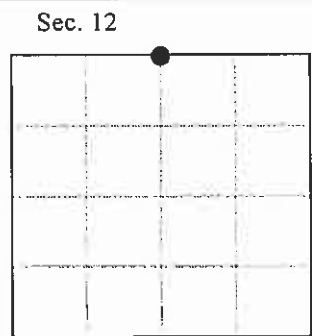


Date: 12-16-99 Reg. No. 8376 S

Employer: DJ&A, P.C.

Office of Clerk and Recorder, County of Lake. This "corner record" was filed for record on DEC 17 1999 10:20 AM was noted on the cross index plat and is assigned page No. 404863, in book No. C-2312 RUTH E. HODGES

County Official *Ruth E. Hodges*
 Cross Index No. E-23 T. 19N R. 20W P.M.M.



• - corner this sheet

NC