

INSTRUCTIONS

1. Original and/or subsequent record used to evaluate the corner position.
2. Description of evidence : , note discrepancies in the record, state method of establishing corners.
3. Description of monument and accessories set to perpetuate the corner position.
4. Sketch of corner, show all pertinent data which can best be shown in a sketch example, corner marking, topography ties, position of accessories, etc.
5. Certification must be signed and sealed by Land Surveyor registered in the State of Montana.
6. Fill in Cross Index & Section Diagram at bottom of sheet.

obliterated 61-404860

**CERTIFIED CORNER RECORDATION**

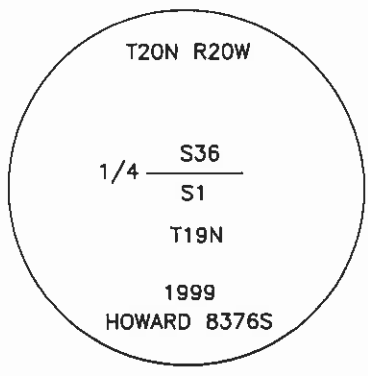
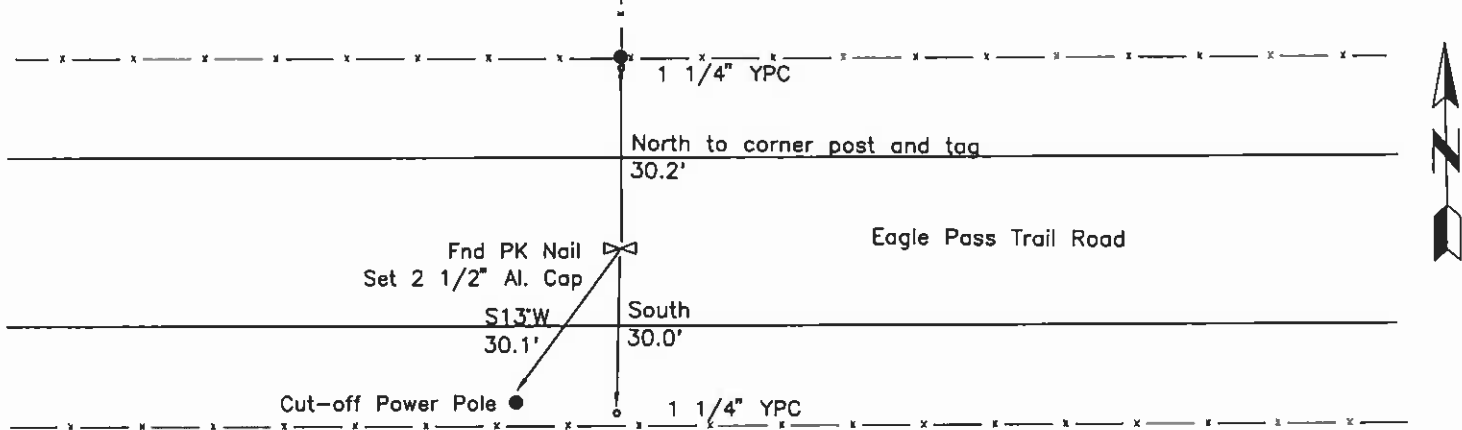
Corner: 1/4 Section Corner 1 & 36 T. 19 & 20N R. 20W P.M.M. Lake County

ORIGINAL RECORD: (G.L.O.) Not Found

SUBSEQUENT RECORD: (1912 U.S.R.S.) Found a stone 10x8x5 firmly set and marked as described.  
(1999 Balstad Survey) See corner recordation #61-399432, set a PK Nail in asphalt.

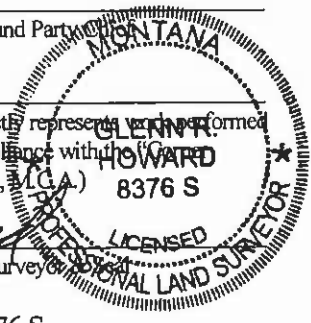
EVIDENCE FOUND: Found a PK Nail in asphalt at intersection of road and fence line to the North.

PERPETUATION: We remove the PK and set a 2 1/2" Aluminum cap on a 5/8" rebar in Eagle Pass Trail Road. From which;  
 A fence post bears North, 30.2' distant; with a MARLS tag.  
 A cut-off power pole bears S13°W, 30.1' distant; with a MARLS tag.  
 A 1 1/4" YPC bears North, 30.0' distant; stamped "Balstad 3322S".  
 A 1 1/4" YPC bears South, 30.0' distant; stamped "Balstad 3322S".



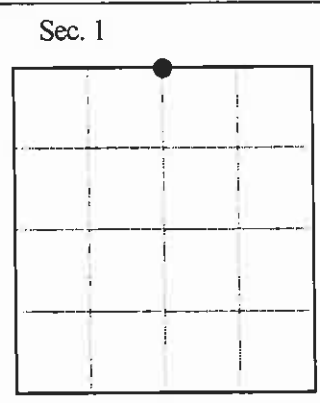
SKETCH OF CORNER

CERTIFICATION  
 I, Carl Kluesner (12447LS)  
 certify the information shown herein is true and correct.  
*Carl Kluesner*  
 Signature Ground Party  
 I, Glenn R. Howard  
 certify that this Corner Record correctly represents work performed by me or under my direction in compliance with the "Corner Recordation Act" (70-22-101, et seq., M.C.A.)  
*Glenn R. Howard*  
 Signature of Surveyor  
 Date: 12-16-99 Reg. No. 8376 S  
 Employer: DJ&A, P.C.



Office of Clerk and Recorder, County of Lake, This "corner record" was filed for record on DEC 17 1999 10:16 A.M. was noted on the cross index plat and is assigned page No. 404860, in book No. C-2309

RUTH E. HODGES *Ruth E. Hodges*  
 County Official  
 Cross Index No. A-23 T. 19N R. 20W PMM  
Z-23 20N 20W



NC