

CERTIFIED LAND CORNER RECORDATION

221659

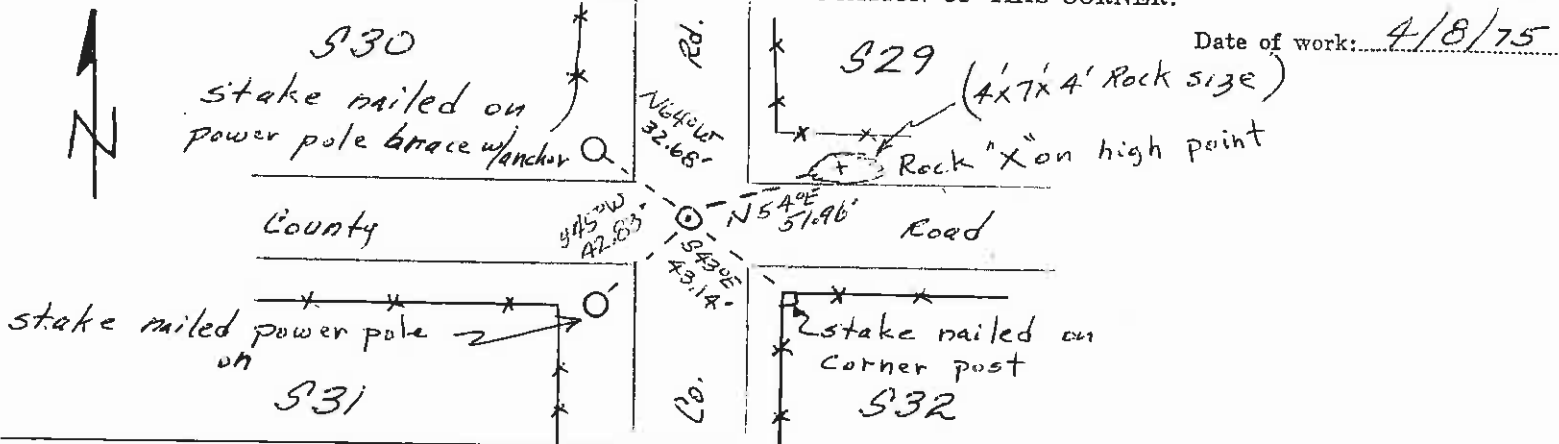
DESCRIPTION OF CORNER EVIDENCE FOUND, AND ORIGINAL RECORD (IF KNOWN)

Found: The remains of the section 29, bearing tree and stump hole. The portion of the tree remaining is a high cut stump, lying on the ground. The scribing has been burned, but the faint letters "BT" are barely visible on the lower end of the blaze. I found the stump hole adjacent to the stump. I set the section corner by using the original call to the bearing tree. This corner location fits the roads and fence locations quite well. No evidence of the other three bearing trees or corner stone, destroyed by road construction.

Original record:

- 80.00 Set a granite stone, 16x12x10 ins., 11 ins. in the ground, for cor. of secs. 29, 30, 31, and 32, marked with 1 notch on S. and 5 notches on E. edge, from which
- A pine, 10 ins. dia., bears N. 40°E., 68 lks. dist., marked T 20 N R 19 W S 29 B T.
- A pine, 9 ins. dia., bears S. 35°E., 76 lks. dist., marked T 20 N R 19 W S 32 B T.
- A pine, 12 ins. dia., bears S. 51°W., 68 lks. dist., marked T 20 N R 19 W S 31 B T.
- A pine, 10 ins. dia., bears N. 46°W., 19 lks. dist., marked T 20 N R 19 W S 30 B T.

DESCRIPTION OF MONUMENT AND ACCESSORIES ESTABLISHED TO PERPETUATE THE ORIGINAL LOCATION OF THIS CORNER: (contd below)

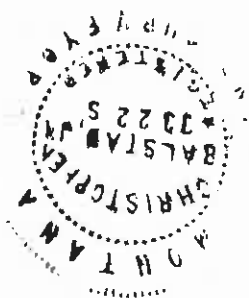


SKETCH, WITH COURSE AND DISTANCE TO ADJACENT CORNERS IF DETERMINED IN THIS SURVEY. (MAY SKETCH OR PASTE REPRODUCTION ON REVERSE SIDE.)

Land, rolling.
Soil, light loam and stony; 2nd. and 3rd. rate.

I set a 1/2" rebar and plastic cap 3 inches below the road surface for the section corner. 4/7/75
For reference see above.

Surveyor's Seal



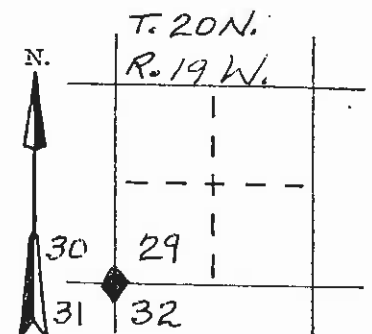
I, _____
certify that the information shown herein is true and correct.

Signature of Ground Party Chief

I, Christopher Balstad Jr.
certify that I have carefully performed or reviewed the work done on the diagrammed corner as reported on this recordation form and approve the same.

Christopher Balstad Jr.
Signature of Surveyor

DIAGRAM OF CORNER:



◆ = Corner recorded on the sheet

33225
Registration Number

Clerk and Recorder, County of Lake, State of Montana

record" was filed for record on the 25th day of April, 1975 at 3:06 o'clock P.M. was noted on the cross-index plat and is

221659, in book No. C-568

Ethel M. Harding, Clerk & Recorder
County Official By: _____, Deputy

Cross Index No. V-5 T. 20 N. R. 19 W. Mer.