

CERTIFIED LAND CORNER RECORDATION

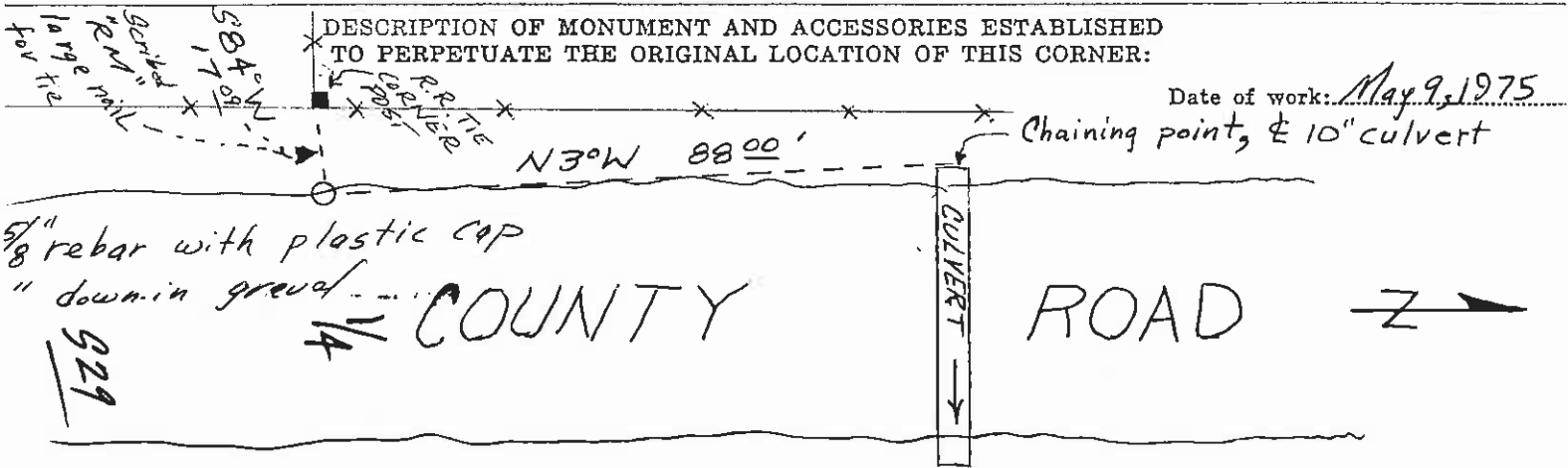
DESCRIPTION OF CORNER EVIDENCE FOUND, AND ORIGINAL RECORD (IF KNOWN)

Original record:

- 40.00 Set a granite stone, 14x10x5 ins., 10 ins. in the ground, for 1/4 sec. cor., marked 1/4 on W. face; from which
 - A pine, 6 ins. dia., bears S.33°30'E., 360 lks. dist., marked 1/4 S 29 B T.
 - A pine, 7 ins. dia., bears N.63°30'W., 135 lks dist., marked 1/4 S 30 B T.

No evidence of original or accessories. Destroyed by road construction.

DESCRIPTION OF MONUMENT AND ACCESSORIES ESTABLISHED TO PERPETUATE THE ORIGINAL LOCATION OF THIS CORNER:



SKETCH, WITH COURSE AND DISTANCE TO ADJACENT CORNERS IF DETERMINED IN THIS SURVEY. (MAY SKETCH OR PASTE REPRODUCTION ON REVERSE SIDE.)

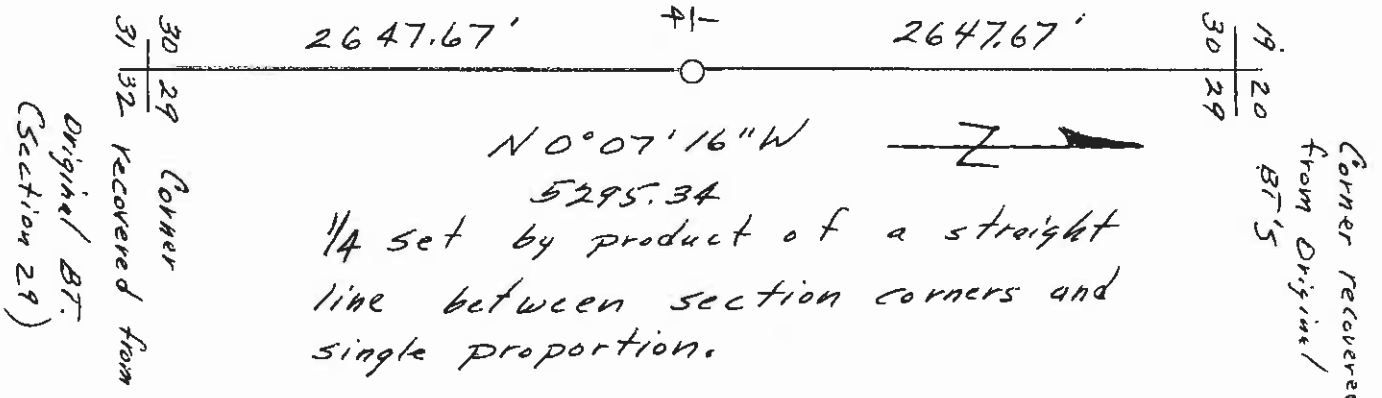
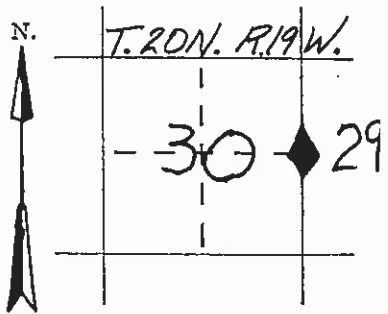


DIAGRAM OF CORNER:



◆ = Corner recorded on the sheet

Surveyor's Seal

I, _____ certify that the information shown herein is true and correct.

Signature of Ground Party Chief

I, Christopher Balstad Jr. certify that I have carefully performed or reviewed the work done on the diagrammed corner as reported on this recordation form and approve the same.

Christopher Balstad Jr. Signature of Surveyor

33229 Registration Number



County of Clerk and Recorder, County of Lake, State of Montana

"corner record" was filed for record on the 2nd day of June, 1975, at 2:47 o'clock P. M., was noted on the cross-index plat and is

recorded on page No. 222157, in book No. C-571

Ethel M. Harding, Clerk & Recorder
County Official By Alma Wilgoin, Dep

Cross Index No. T-5 T. 20 N. R. 19 W. Mer.