

CERTIFIED LAND CORNER RECORDATION

193209

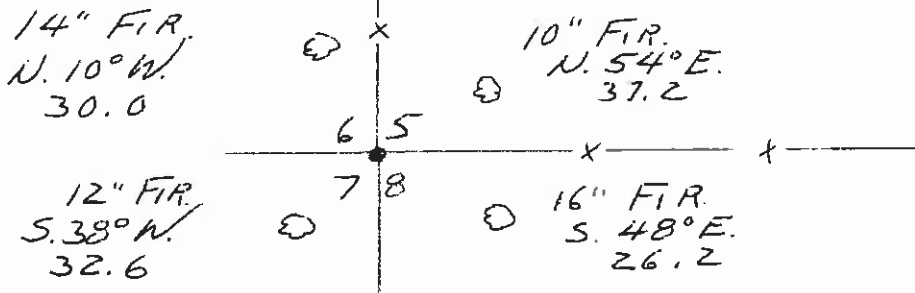
DESCRIPTION OF CORNER EVIDENCE FOUND, AND ORIGINAL RECORD (IF KNOWN)

Original Record

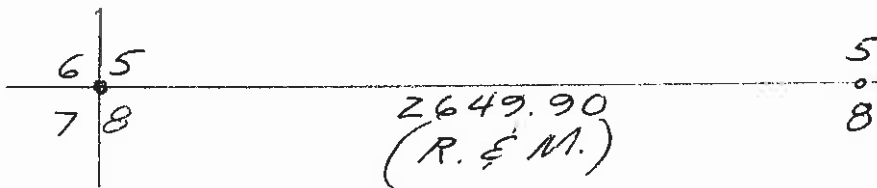
Corner = Post 3' x 4" (not found)
 FIR. 14" Dia. N. 53° E. 54 lks. (stump found)
 FIR. 14" " S. 39° E. 9 " (depression found)
 FIR. 14" " S. 33° W. 68 " (stump found)
 Corner established @ intersection of B.T.'s distances

DESCRIPTION OF MONUMENT AND ACCESSORIES ESTABLISHED TO PERPETUATE THE ORIGINAL LOCATION OF THIS CORNER:

Date of work: April 1970



SKETCH, WITH COURSE AND DISTANCE TO ADJACENT CORNERS IF DETERMINED IN THIS SURVEY. (MAY SKETCH OR PASTE REPRODUCTION ON REVERSE SIDE.)



Surveyor's Seal

I, _____ certify that the information shown herein is true and correct.

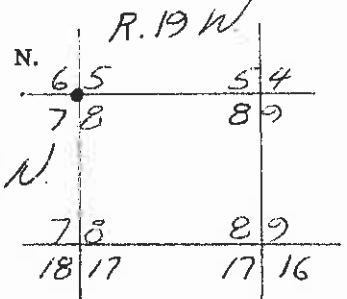
Signature of Ground Party Chief

I, HARRY P. MEDLAND certify that I have carefully performed or reviewed the work done on the diagrammed corner as reported on this recordation form and approve the same.

Harry P. Medland
 Signature of Surveyor

2229.5
 Registration Number

DIAGRAM OF CORNER:



● = Corner recorded on the sheet

Office of Clerk and Recorder, County of Lake, Montana

This "corner record" was filed for record on the 15 day of April, 1970, was noted on the cross-index plat and is

assigned page No. 193209, in book No. 102

ETHEL M. HARDING CLERK & RECORDER
 County Official

Cross Index No. E-5 T. 20 R. 19 Mer.

By: Darlene Deigen