

CERTIFIED LAND CORNER RECORDATION

210692

DESCRIPTION OF CORNER EVIDENCE FOUND, AND ORIGINAL RECORD (IF KNOWN)

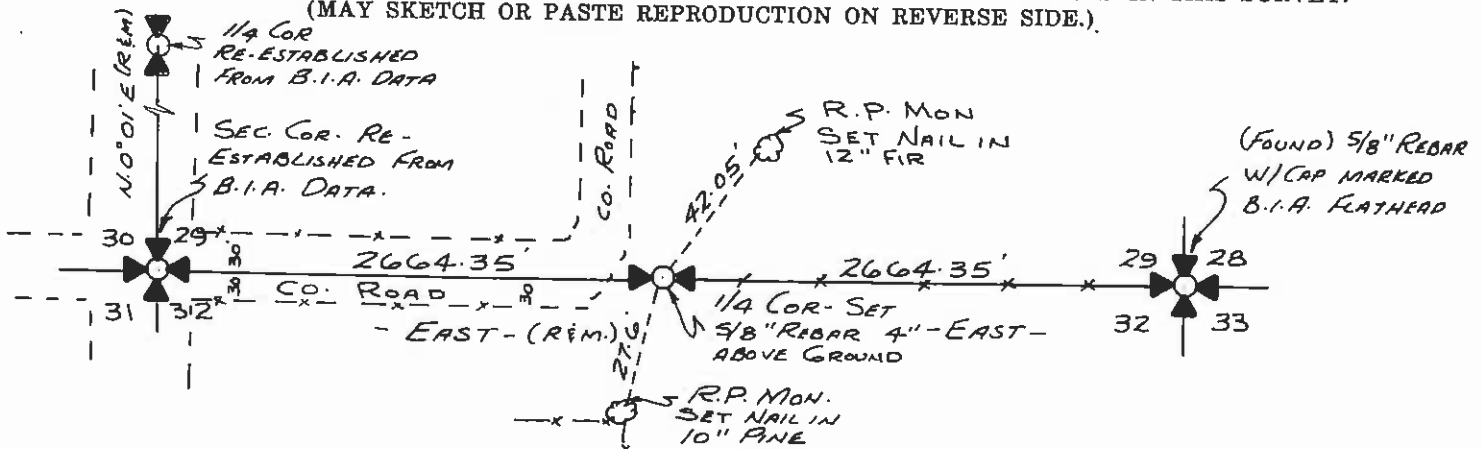
No EVIDENCE OF ORIGINAL

DESCRIPTION OF MONUMENT AND ACCESSORIES ESTABLISHED TO PERPETUATE THE ORIGINAL LOCATION OF THIS CORNER:

Date of work: JUNE 27, 1973.

SEE - SKETCH BELOW

SKETCH, WITH COURSE AND DISTANCE TO ADJACENT CORNERS IF DETERMINED IN THIS SURVEY. (MAY SKETCH OR PASTE REPRODUCTION ON REVERSE SIDE.)



Surveyor's Seal

I, DONALD H. WESTER certify that the information shown herein is true and correct.

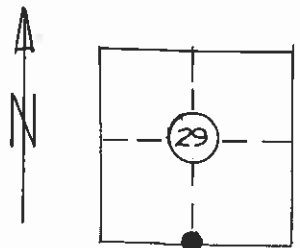
Signature of Ground Party Chief

I, certify that I have carefully performed or reviewed the work done on the diagrammed corner as reported on this recordation form and approve the same.

Signature of Surveyor

DIAGRAM OF CORNER:

T. 20 N. R. 19 W.



Registration Number

Office of Clerk and Recorder; County of Lehigh

This "corner record" was filed for record on the JUL 3 1973 day of 11:20 AM, was noted on the cross-index plat and is assigned page No. 210692, in book No. C-406

County Official