

CERTIFIED LAND CORNER RECORDATION

193208

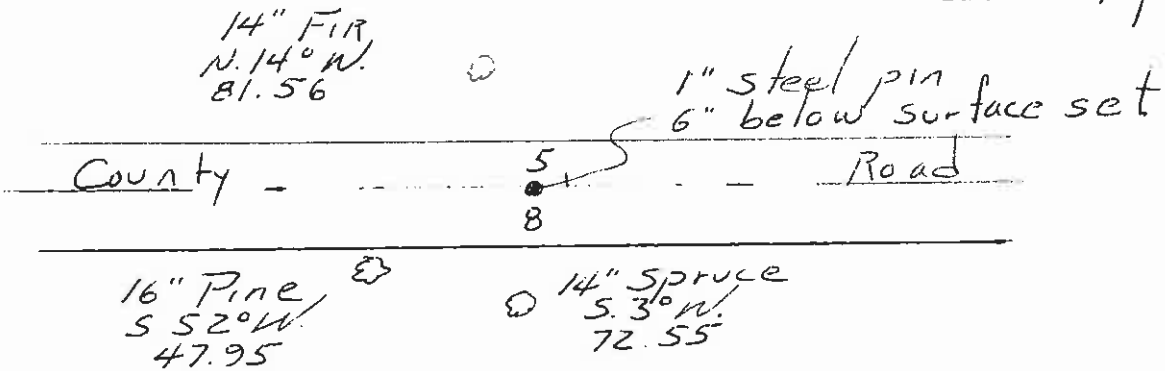
DESCRIPTION OF CORNER EVIDENCE FOUND, AND ORIGINAL RECORD (IF KNOWN)

Original Record

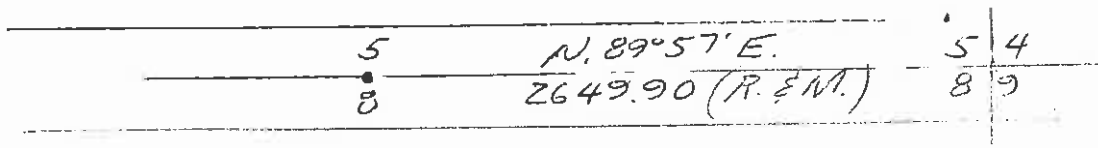
Corner = post 3' x 3" (not found)
 Pine 14" dia. N. 22° W. 25 lks. (found)
 Pine 14" " S. 43° E. 60 " (not found) ^{old stump}
 Corner established from stump of original
 B.T. found.

DESCRIPTION OF MONUMENT AND ACCESSORIES ESTABLISHED TO PERPETUATE THE ORIGINAL LOCATION OF THIS CORNER:

Date of work: April 1970



SKETCH, WITH COURSE AND DISTANCE TO ADJACENT CORNERS IF DETERMINED IN THIS SURVEY. (MAY SKETCH OR PASTE REPRODUCTION ON REVERSE SIDE.)



Surveyor's Seal

I, _____
 certify that the information shown herein is true and correct.

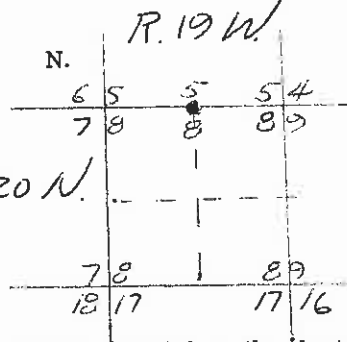
Signature of Ground Party Chief

I, HARRY P MEDLAND
 certify that I have carefully performed or reviewed the work done on the diagrammed corner as reported on this recordation form and approve the same.

Harry P Medland
 Signature of Surveyor

22295
 Registration Number

DIAGRAM OF CORNER:



● = Corner recorded on the sheet

Office of Clerk and Recorder, County of Leke, Montana

This "corner record" was filed for record on the 15 day of April 1970, was noted on the cross-index plat and is

assigned page No. 193208, in book No. C-101

M. HARDING CLERK & RECORDER
 County Official

Cross Index No. E-7 T. 20 R. 19 Mer.

By: Dorlene Prigen