

CERTIFIED LAND CORNER RECORDATION  
(REFERENCE FSM 7153.53)

224355 RI-7150-1

DESCRIPTION OF CORNER EVIDENCE FOUND, AND ORIGINAL RECORD (IF KNOWN)

At the 1/4 Cor between S 21 and 28 T 20 N R19W:

- Rec: Set a sandstone 14" x 6" ...not found-probably picked with field rock
- Rec: A 20" Pine bears N47° W 20 lks...found large pine stump with old ax marks
- Rec: A 20" Pine bears S14° E 24 lks...found traces fo burned out stump near Rec bear and dist.

DESCRIPTION OF MONUMENT AND ACCESSORIES ESTABLISHED TO PERPETUATE THE ORIGINAL LOCATION OF THIS CORNER:

Date of work: 11-73

At Record bearing and dist. from the S21 BT Stump we set a 1" pipe with a 2" brass cap marked as follows:

SKETCH, WITH COURSE AND DISTANCE TO ADJACENT CORNERS IF DETERMINED IN THIS SURVEY. (MAY SKETCH OR PASTE REPRODUCTION ON REVERSE SIDE.)

SEE SEC 21 DIAGRAM ON REVERSE

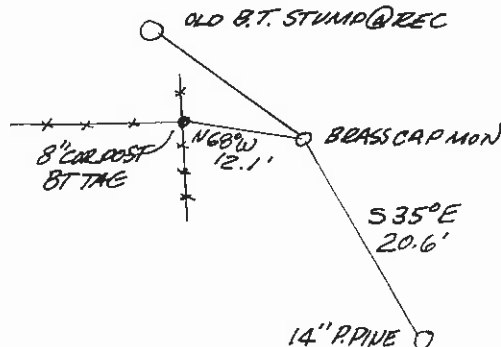


DIAGRAM OF CORNER:

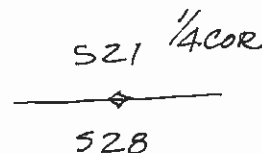
Surveyor's Seal

I, William Bayer 3321 S  
certify that the information shown herein is true and correct.

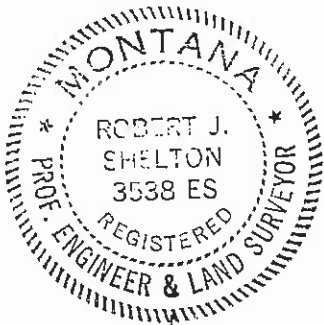
N.

Signature of Ground Party Chief

I, Robert J. Shelton  
certify that I have carefully performed or reviewed the work done on the diagrammed corner as reported on this recordation form and approve the same.



= Corner recorded on the sheet



*Robert J. Shelton*  
Signature of Surveyor

3538 ES  
Registration Number

Office of Clerk and Recorder, County of Lake, State of Montana

This "corner record" was filed for record on the 3rd day of November 1975, at 4:36 o'clock P.M.

assigned page No. 224355, in book No. C-605

Ethel M. Harding, Clerk & Recorder  
County Official By: D. Wilson, Dep

Cross Index No. R-11 T. 20 N. R. 19 W. Mer.