

CERTIFIED LAND CORNER RECORDATION

DESCRIPTION OF CORNER EVIDENCE FOUND, AND ORIGINAL RECORD (IF KNOWN)

See sketch below & C.O.S. No. 2184

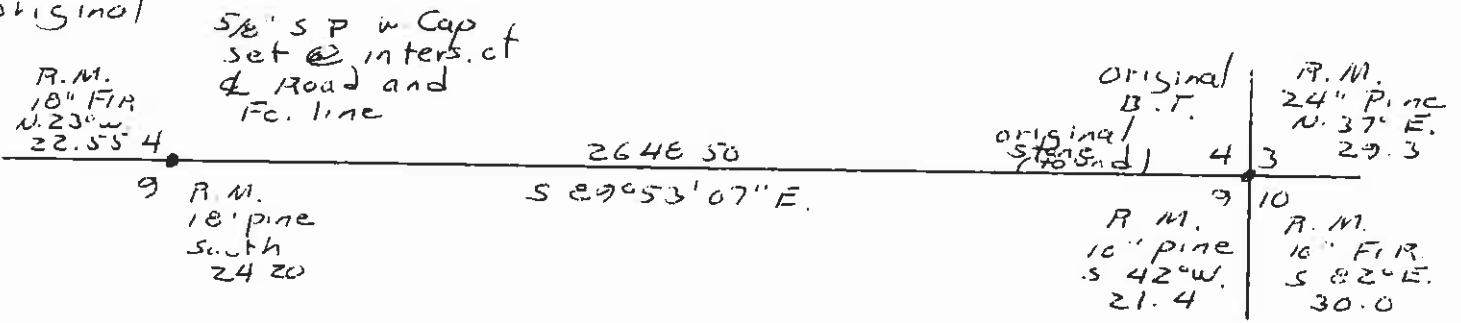
DESCRIPTION OF MONUMENT AND ACCESSORIES ESTABLISHED TO PERPETUATE THE ORIGINAL LOCATION OF THIS CORNER:

Date of work: Feb 1974

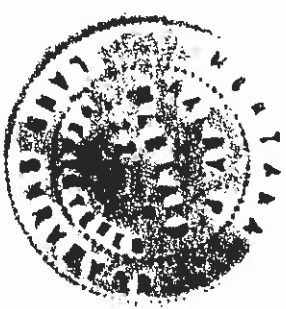
see sketch below & C.O.S. No. 2184

SKETCH, WITH COURSE AND DISTANCE TO ADJACENT CORNERS IF DETERMINED IN THIS SURVEY. (MAY SKETCH OR PASTE REPRODUCTION ON REVERSE SIDE.)

no evidence of original



Surveyor's Seal



I, _____ certify that the information shown herein is true and correct.

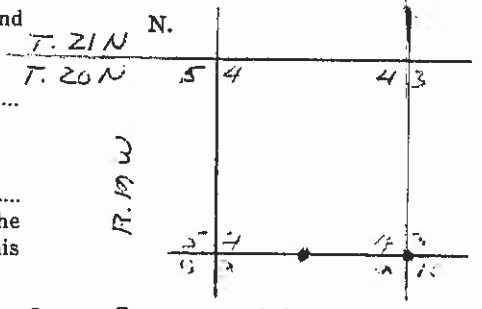
Signature of Ground Party Chief

I, HARRY P. MEDLAND certify that I have carefully performed or reviewed the work done on the diagrammed corner as reported on this recordation form and approve the same.

Harry P. Medland
Signature of Surveyor

22295
Registration Number

DIAGRAM OF CORNER:



• = Corner recorded on the sheet

Office of Clerk and Recorder, County of Lake, State of Montana

This "corner record" was filed for record on the 18th day of February 1975 at 11:45 o'clock A. M.

Micro. 220782 signed [initials] in book No. C-541

Ethel M. Harding, Clerk & Recorder
County Official By [signature] Dep.