

CERTIFIED CORNER RECORDATION

Corner CLOSING COR. S.1, S.6

T. 20N. R. 20W., PMM

LAKE County

RECORD:

G.L.O. (1905), set a slate stone 16"x10"x8", 11" in the ground for closing cor. of Ts. 20N., Rs. 20W. and 21W., marked C C 20N on S., 20W on E., and 21W on W. faces; with 6 grooves on S., E. and W. faces; dig pits crosswise on each sec. line E., W., and S. of cor.; and raised a mound of earth S. of cor.; 15.75 ch. W. of standard cor. secs. 31 and 32.

(1951) Hwy. plans S-306(2), shows tie to corner but does not specify monument.

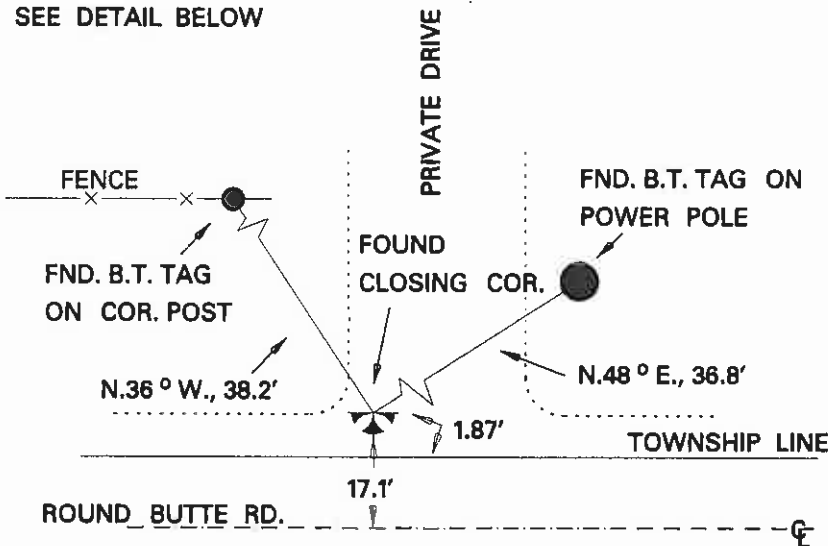
FOUND:

3 1/4" alum. cap marked as shown below, and below the pavement grade of a private drive approach, 17.1' north of the centerline of Round Butte Rd. and found the following references:

Found a B.T. tag on a 8" fence post bears, N.36 ° W., 38.15'

Found a B.T. tag on power pole No. 31860 bears, N.48 ° E., 36.8'

SEE DETAIL BELOW



Bearings by Silva compass 19 ° E. decl.
Distance by fiberglass tape



SKETCH OF CORNER

CERTIFICATION

I, Jim Turner

certify the information shown herein is true and correct.

Jim Turner
Signature of Ground Party Chief

I, Donald M. Reed

certify that this Corner Record correctly represents work performed by me or under my direction in compliance with the "Corner Recordation Act" (70-22-10, et seq., MCA)

Donald M. Reed
Signature of Surveyor & Seal

Date: 1-09-03

Reg. No. 10999LS

Employer: MDT

Sec. 6

Office of Clerk and Recorder, County of LAKE. This "corner record" was filed for record on MAR 06 2003 11:35 A.M. was noted on the cross-index plat, and is assigned Page No. , in Book No. .

C-2490

433616

RUTH E. HODGES

County Official

Cross Index No. A-1 T. 20N. R. 20W., PMM

— Corner this sheet

See N/C