

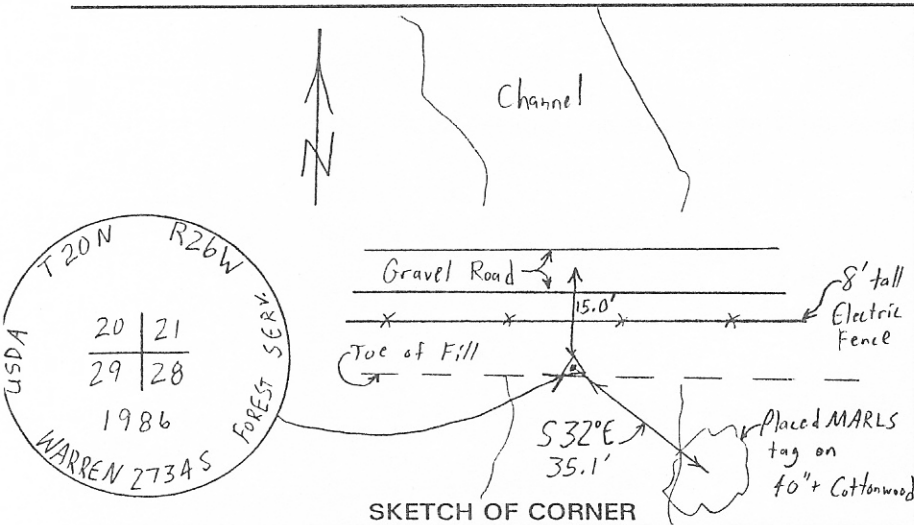
INSTRUCTIONS

1. Original and/or subsequent record used to evaluate the corner position.
2. Description of evidence found, note discrepancies in the record, state method of establishing lost or obliterated corners.
3. Description of monument and accessories set to perpetuate the corner position.
4. Sketch of corner, show all pertinent data which can best be shown in a sketch example, corner marking, topography ties, position of accessories, etc.
5. Certification must be signed and sealed by Land Surveyor registered in the State of Montana.
6. Fill in Cross Index & Section Diagram at bottom of sheet.

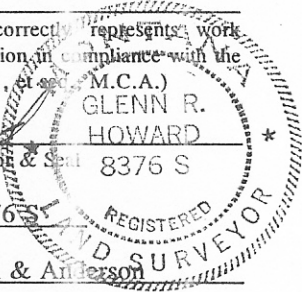
CERTIFIED CORNER RECORDATION

Corner: Section Corner 20,21,28 & 29 T. 20N R. 26W P.M.M. Sanders County

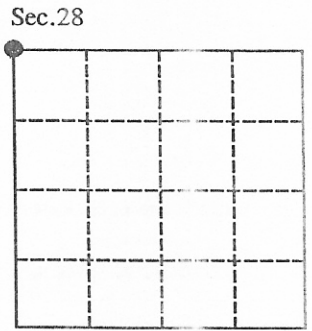
ORIGINAL RECORD (1886): Set a post at the left bank of a slough.
 EVIDENCE FOUND: 3 1/2" aluminum cap, marked as per sketch.
 PERPETUATION: Placed a MARLS tag on a Cottonwood, 40 ins. diam., bearing S32°E, 35.1 feet.



CERTIFICATION
 I, Kevin Williams
 certify the information shown herein is true and correct.
Kevin Williams
 Signature Ground Party Chief
 I, Glenn R. Howard
 certify that this Corner Record correctly represents work performed by me or under my direction in compliance with the "Corner Recordation Act" (70-22-101, et seq. M.C.A.)
Glenn R. Howard
 Signature of Surveyor & Seal
 Date: 9-20-96 Reg. No. 8376 S
 Employer: Druyvestein Johnson & Anderson



Office of Clerk and Recorder, County of Sanders. This "corner record" was filed for record on Sept. 26, 1996 at 2:00pm was noted on the cross index plat and is assigned page No. _____, in book No. 4 358 Tollie Wollaston, By: Roni A. Wright County Official



•- corner this sheet

no fee

Cross Index No. R-9 T. 20N R. 26W PMM

223331