

CERTIFIED LAND CORNER RECORDATION

Lake County

DESCRIPTION OF CORNER EVIDENCE FOUND, AND ORIGINAL RECORD (IF KNOWN)

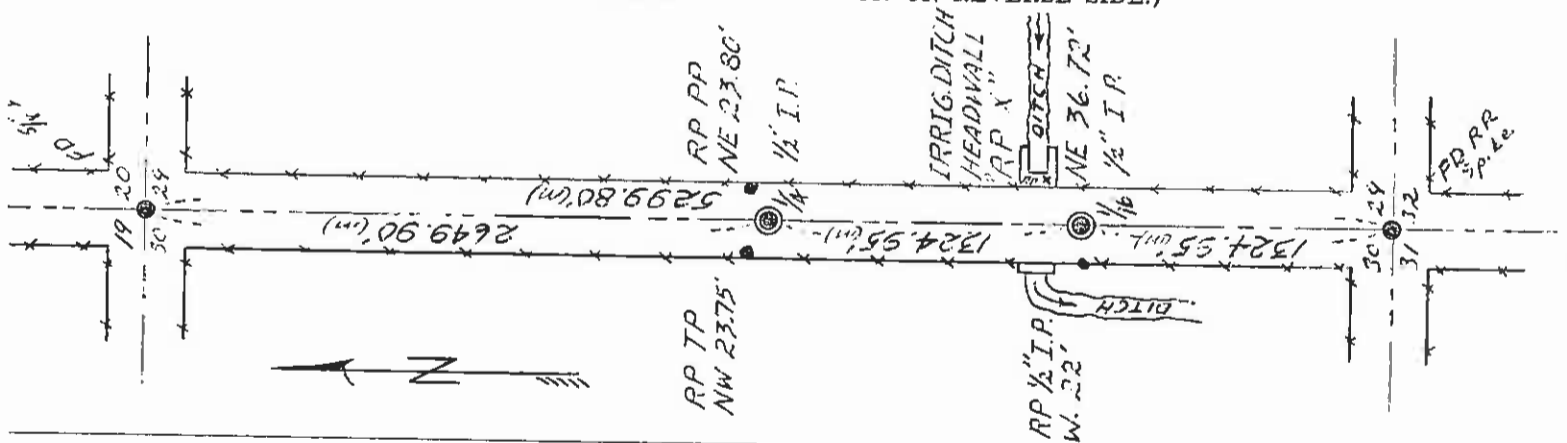
No original evidence found at any of the corner locations shown on this sheet.

DESCRIPTION OF MONUMENT AND ACCESSORIES ESTABLISHED TO PERPETUATE THE ORIGINAL LOCATION OF THIS CORNER:

Date of work: 10-17-73

This information included on below sketch.

SKETCH, WITH COURSE AND DISTANCE TO ADJACENT CORNERS IF DETERMINED IN THIS SURVEY. (MAY SKETCH OR PASTE REPRODUCTION ON REVERSE SIDE.)



Surveyor's Seal

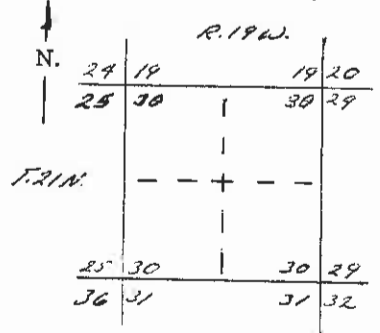
I, Michael L. Dugala certify that the information shown herein is true and correct.

Michael L. Dugala  
Signature of Ground Party Chief

I, Christopher Balstad Jr. certify that I have carefully performed or reviewed the work done on the diagrammed corner as reported on this recordation form and approve the same.

Christopher Balstad Jr.  
Signature of Surveyor

DIAGRAM OF CORNER:



⊙ = Corner recorded on the sheet

33225  
Registration Number

County of Clerk and Recorder, County of Lake

"corner record" was filed for record on the NOV. 14 1973 day of NOV. 14 1973, 1973, was noted on the cross-index plat and is

recorded page No. C-461, in book No. C-461

James Pedersen  
County Official

Cross Index No. T-5 U-5 T. 21 N R. 19 W Mer.