

CERTIFIED LAND CORNER RECORDATION

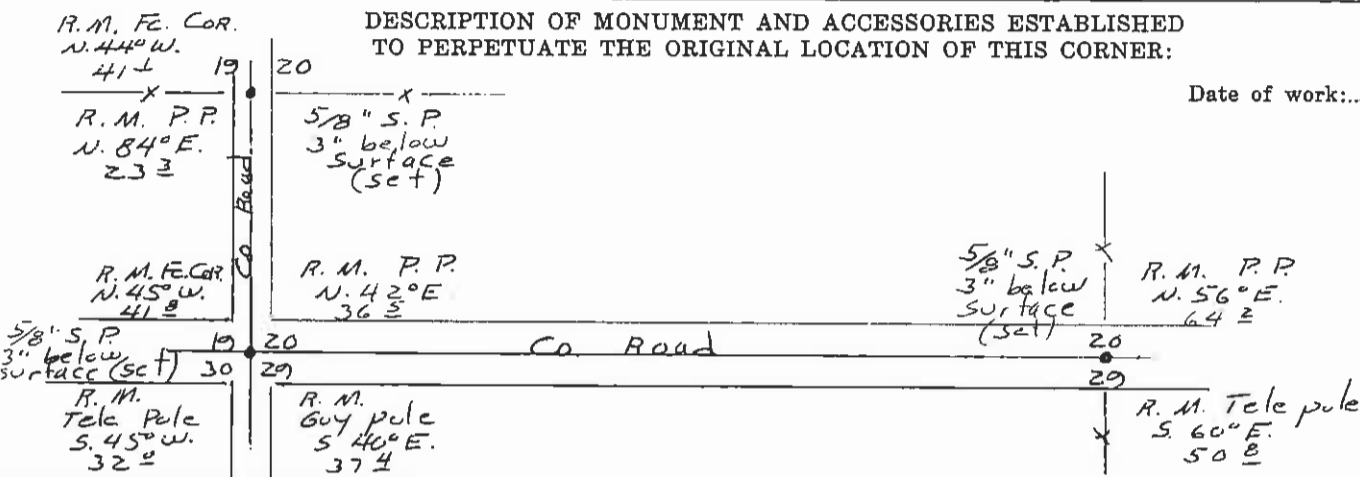
207492

DESCRIPTION OF CORNER EVIDENCE FOUND, AND ORIGINAL RECORD (IF KNOWN)

No evidence of original corners or accessories.
All original evidence destroyed by road construction.

DESCRIPTION OF MONUMENT AND ACCESSORIES ESTABLISHED TO PERPETUATE THE ORIGINAL LOCATION OF THIS CORNER:

Date of work: Dec 1972



SKETCH, WITH COURSE AND DISTANCE TO ADJACENT CORNERS IF DETERMINED IN THIS SURVEY. (MAY SKETCH OR PASTE REPRODUCTION ON REVERSE SIDE.)

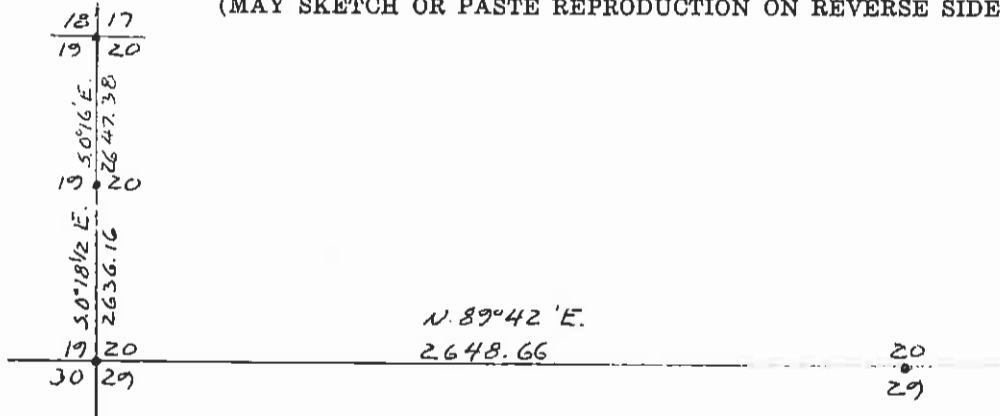
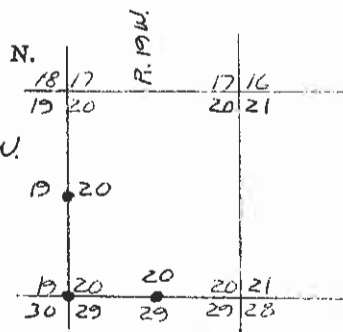


DIAGRAM OF CORNER:



• = Corner recorded on the sheet

Surveyor's Seal

I, _____ certify that the information shown herein is true and correct.

Signature of Ground Party Chief

T. ZIN

I, HARRY P. MEDLAND certify that I have carefully performed or reviewed the work done on the diagrammed corner as reported on this recordation form and approve the same.

Harry P. Medland
Signature of Surveyor

2229.5
Registration Number

Office of Clerk and Recorder, County of Lake

This "corner record" was filed for record on the JAN 15 1973 day of 8:32 A.M. 19____, was noted on the cross-index plat and is

assigned page No. _____, in book No. 0-301

ETHEL M. HARDING

County Official

Cross Index No. P-5 T. 21N R. 19W Mer.

R-5,7