

INSTRUCTIONS

1. Original and/or subsequent record used to evaluate the corner position.
2. Description of evidence found, note discrepancies in the record, state method of establishing lost or obliterated corners.
3. Description of monument and accessories set to perpetuate the corner position.
4. Sketch of corner, show all pertinent data which can best be shown in a sketch example, corner marking, topography ties, position of accessories, etc.
5. Certification must be signed and sealed by Land Surveyor registered in the State of Montana.
6. Fill in Cross Index & Section Diagram at bottom of sheet.

CERTIFIED CORNER RECORDATION

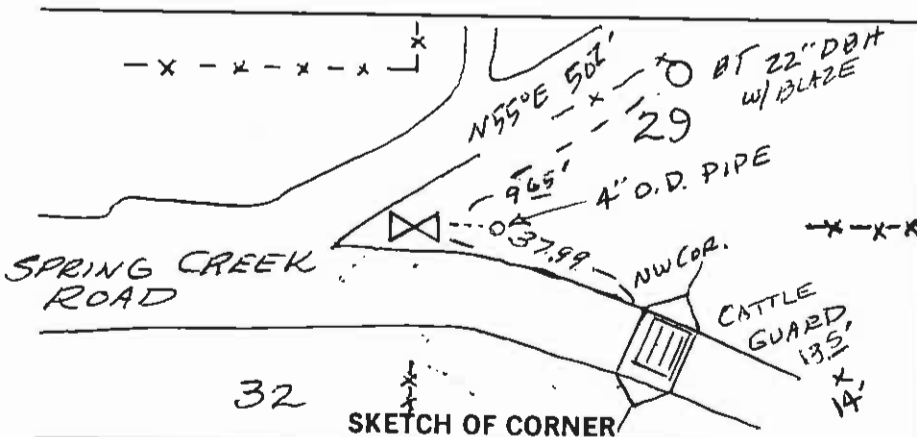
Corner 1/4 SEC. 29 & 32 T. 21N. R. 19W P.M.M. LAKE County

1/4 Sections 29 & 32, T.21 N. R.19N. Lake County

Original Record: 40.00 Set a sand stone, 16 x 12 x 9 ins., .11 ins. the ground, for 1/4 cor., marked 1/4 on the north face; from which a pine, 16 ins. dia. bears N.52 W., 47 lks. dist.; marked 1/4 S29 BT.
 A pine, 16 ins. dia., bears S.69 W., 95 lks. dist.; marked 1/4 S 32 BT.

Found: The original G.L.O. 1/4 corner, in a swale between two road approaches to the north and east. The G.L.O. BT's, the S .69 W 95 links and the N. 52 W., 47 links one is gone also. Harry Medland 2229 S, 15' pine S15 W 28.75 ft. BT he marked in his section sketch, I found rotten cut stump on east-west fence.

A 3/4" smooth rod in on the north side of the stone, my chaining point, a 1/2"x1/2" < iron is on the east. Stone is plainly marked.



CERTIFICATION

I, _____ certify the information shown herein is true and correct.

Signature Ground Party Chief
CHRISTOPHER BALSTAD

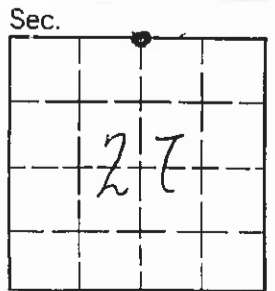
I, _____ certify that this Corner Record correctly represents work performed by me or under my direction in compliance with the "Corner Recordation Act" (70-22-101, et seq., M.C.A.)

Christopher Balstad
 Signature of Surveyor & Seal

Date: 11/27/02 Reg. No. 33225

Employer: _____

Office of Clerk and Recorder, County of LAKE. This "corner record" was filed for record on DEC 04 2002 at 4:58 PM was noted on the cross-index plat and is assigned page No. 430807, in book No. _____



C-2462 Fee w/c

RUTH E. HODGES
 County Official by Debi Roche deputy
 Cross Index No. V 7 T. 21N. R. 19W P.M.M.