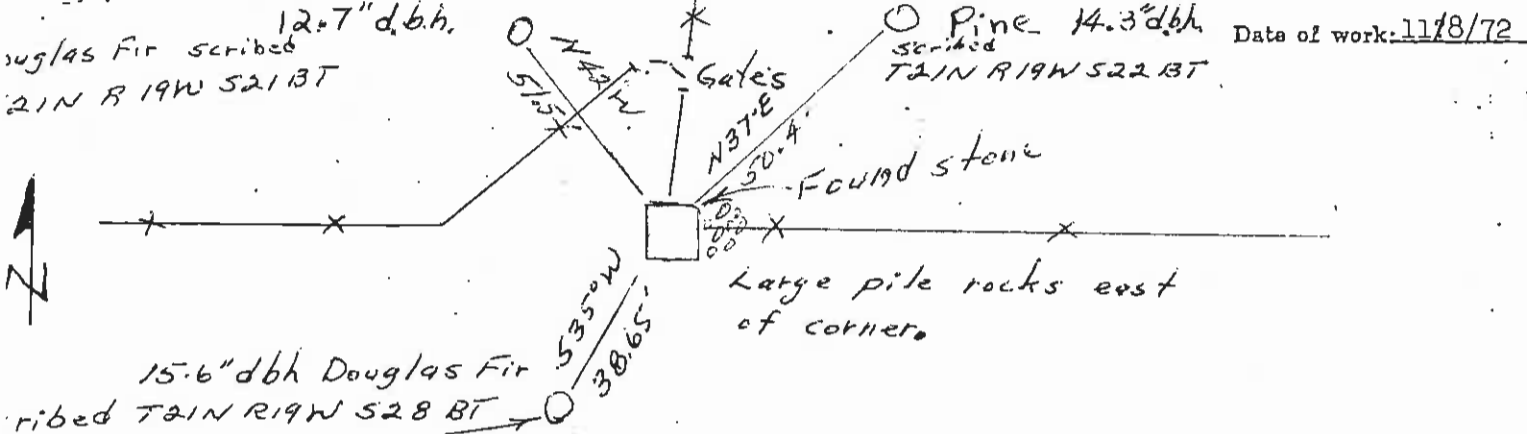


CERTIFIED LAND CORNER RECORDATION 207729

DESCRIPTION OF CORNER EVIDENCE FOUND, AND ORIGINAL RECORD (IF KNOWN)

Original record: Set a slate stone 14x9x7 ins. 10 ins. in the ground, for cor, of secs. 21, 22, 27 and 28, marked with 2 notches on E. edge; Found original stone in place; record cont: A pine, 24 ins. dia.; bears N31°E 57 lks dist.; marked T21N R19W S22BT. A fir, 30" dia. bears 36°E 44 lks. marked T21N R19W BT. A pine 24" dia. bears S82°W 76 lks. dist., marked T21N R19W S28BT. A pine, 20" dia. bears N48°W 72 lks. dist. marked T21N R19W BT. No evidence of these bearing trees found. All that remains is a slight depression where once the trees were. I marked three new bearing trees as shown below.

DESCRIPTION OF MONUMENT AND ACCESSORIES ESTABLISHED TO PERPETUATE THE ORIGINAL LOCATION OF THIS CORNER:



SKETCH, WITH COURSE AND DISTANCE TO ADJACENT CORNERS IF DETERMINED IN THIS SURVEY. (MAY SKETCH OR PASTE REPRODUCTION ON REVERSE SIDE.)

Surveyor's Seal

I, _____
 certify that the information shown herein is true and correct.

Signature of Ground Party Chief

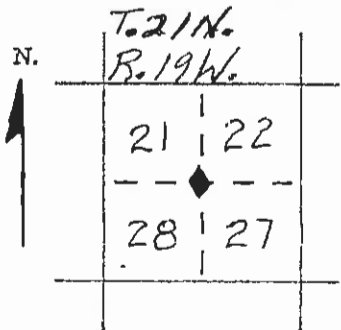
Christopher Balstad Jr.

I, _____
 certify that I have carefully performed or reviewed the work done on the diagrammed corner as reported on this recordation form and approve the same.

Christopher Balstad Jr.
 Signature of Surveyor

33225
 Registration Number

DIAGRAM OF CORNER:



◆ = Corner recorded on the sheet

Office of Clerk and Recorder, County of Lake

This "corner record" was filed for record on the JAN 26 1973 day of January, 1973, was noted on the cross-index plat and is assigned page No. _____, in book No. C-310

ETHEL M. HARDING

County Official

Cross Index No. R-13 T. 21 N. R. 19 W. Mer.