

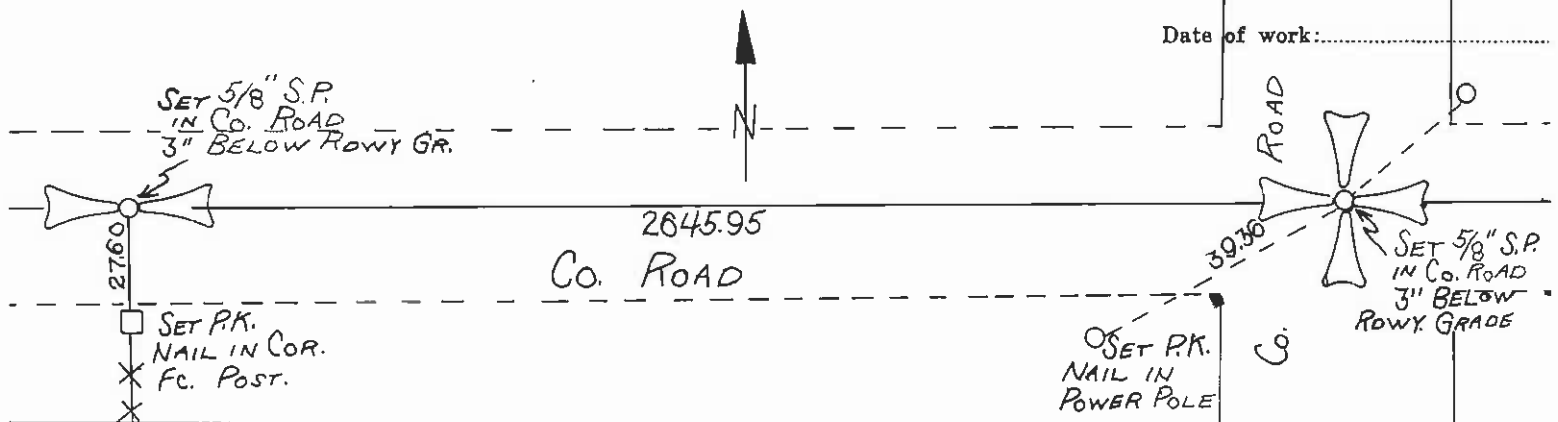
CERTIFIED LAND CORNER RECORDATION

DESCRIPTION OF CORNER EVIDENCE FOUND, AND ORIGINAL RECORD (IF KNOWN)

Original Corners and accessories destroyed by county road construction.

DESCRIPTION OF MONUMENT AND ACCESSORIES ESTABLISHED TO PERPETUATE THE ORIGINAL LOCATION OF THIS CORNER:

Date of work:



SKETCH, WITH COURSE AND DISTANCE TO ADJACENT CORNERS IF DETERMINED IN THIS SURVEY. (MAY SKETCH OR PASTE REPRODUCTION ON REVERSE SIDE.)

--SEE REVERSE SIDE--

Surveyor's Seal

I,, certify that the information shown herein is true and correct.

Signature of Ground Party Chief

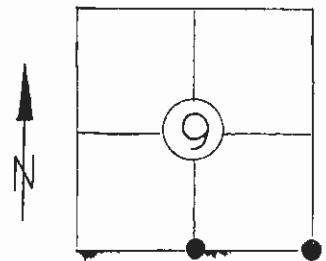
I,, certify that I have carefully performed or reviewed the work done on the diagrammed corner as reported on this recordation form and approve the same.

Donald H. West
Signature of Surveyor

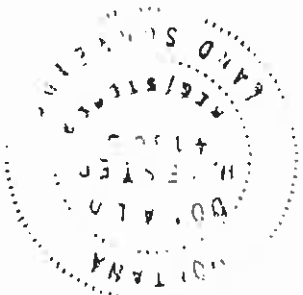
4130 S
Registration Number

DIAGRAM OF CORNER:

T 21 N. R. 20 W.



● DENOTES COR. SET



ice of Clerk and Recorder; County of LAKE, STATE OF MONTANA at 10:01 a.m.
 s "corner record" was filed for record on the 10th day of DECEMBER 1981, was noted on the cross-index plat and is
 signed Micro 265155, in book No. C-1152.
 Ethel M. Harding, Lake County Clerk & Recorder
 By Steven W. Wilson, Deputy County Official
 Cross Index No. J-11 J-13 T. 21 N R. 20 W Mer.