

INSTRUCTIONS

1. Original and/or subsequent record used to evaluate the corner position.
2. Description of evidence found, note discrepancies in the record, state method of establishing lost or obliterated corners.
3. Description of monument and accessories set to perpetuate the corner position.
4. Sketch of corner, show all pertinent data which can best be shown in a sketch example, corner marking, topography lies, position of accessories, etc.
5. Certification must be signed and sealed by Land Surveyor registered in the State of Montana.
6. Fill in Cross Index & Section Diagram at bottom of sheet.

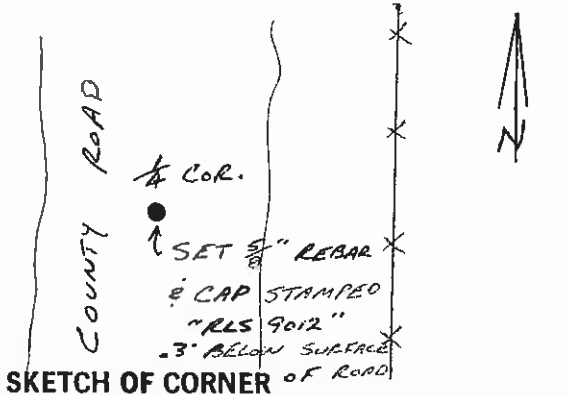
CERTIFIED CORNER RECORDATION

Corner 1/4 COR. COMMON TO T. 21 N. R. 20 W. P.M.M. LAKE County  
SEC.'S 3 & 4

RECORD: NO RECORD FOUND

FOUND: NO EVIDENCE OF MONUMENTATION FOUND.

SET: 5/8" REBAR AND CAP STAMPED "RLS 9012" .3'  
 BELOW SURFACE OF COUNTY ROAD.  
 CORNER SET BY SINGLE PROPORTION  
 AFTER PARTIAL SECTION BREAKDOWN.



I, \_\_\_\_\_ certify the information shown herein is true and correct.

Signature Ground Party Chief  
 I, GREGORY B. MARENCO  
 certify that this Corner Record correctly represents work performed by me or under my direction in compliance with the "Corner Recordation Act" (70-22-101, et seq., M.C.A.)

GREGORY B. MARENCO  
 Signature of Surveyor & Seal

Date: 8-19-88 Reg. No. 9012

Employer: \_\_\_\_\_

Office of Clerk and Recorder, County of Spive. This "corner record" was filed for record on AUG 19 '88 at 2:45 P.M. was noted on the cross-index plat and is assigned No. 313831, in File No. C-1605 by LORIN JACOBSON, CLERK & RECORDER County Official

