

INSTRUCTIONS

1. Original and one subsequent record used to evaluate the corner position.
2. Description of evidence found, note discrepancies in the record, state method of establishing lost or obliterated corners.
3. Description of monument and accessories set to perpetuate the corner position.
4. Sketch of corner, show all pertinent data which can best be shown in a sketch example, corner marking, topography ties, position of accessories, etc.
5. Certification must be signed and sealed by Land Surveyor registered in the State of Montana.
6. Fill in Cross Index & Section Diagram at bottom of sheet.

CERTIFIED CORNER RECORDATION

Corner S14 | S13 Section Corner S23 | S24 T. 21N R. 20W P.M.M. Lake County

G.L.O. Record (Raymond C. Trumbull 1905):

Set a slate stone, 18x18x10 ins., 12 ins. in the ground, for cor. of secs. 13,14,23,and24, marked with 3 notches on S. and 1 notch on E. edge; from which a pine, 30 ins. dia., bears S. 63° 15' W., 66 lks. dist., marked T21N R20W S 23 BT.
No other available bearing trees; I dig pits, 18x18x12 ins., in each sec., 5½ ft. dist.; and raise a mound of earth, 4 ft. base, 2 ft. high, W of cor.

Subsequent Record:

Numerous C of S's refer to "S.P. in pvmt." or "R.R. spike in pavement", but none attest to its origin. The position falls 10.5 feet west of the apparent centerline of U.S. Hwy No. 93 and on the easterly projection of a fence running west. 1970 M.D.O.H. plans for FAP F-63(12) shows section corner 10.4 feet left of centerline.

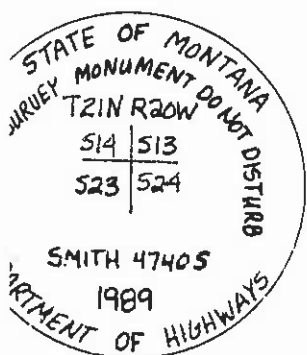
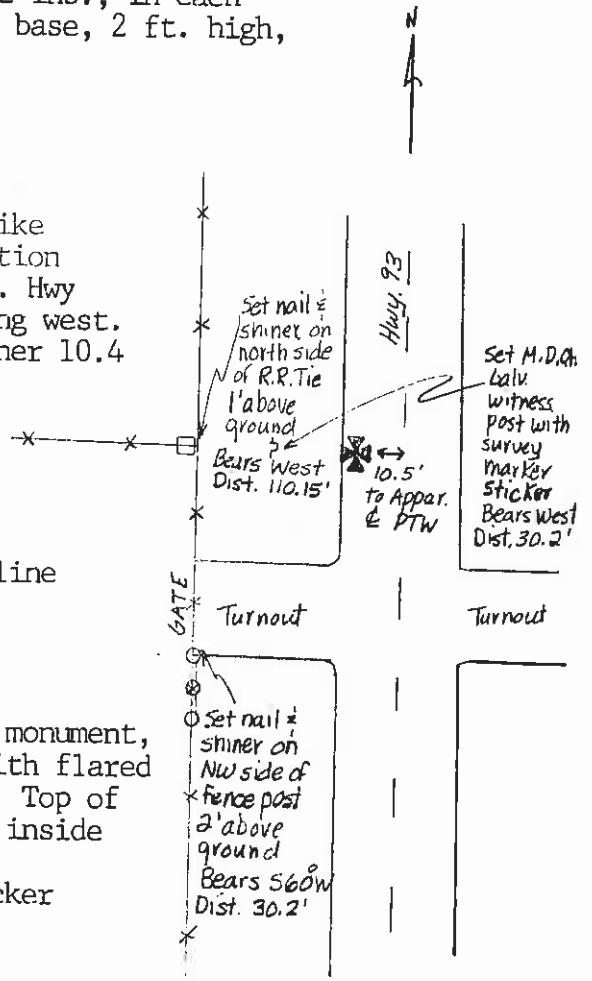
Evidence Found:

Found railroad spike 10.5 feet west of apparent centerline of U.S. Hwy. No.93.

Monumentation:

At location of railroad spike, set a standard M.D.O.H. monument, which consists of a 2¼" dia.x 30" long aluminum pipe with flared base and 3¼" dia. aluminum cap stamped as shown below. Top of cap buried 2" below surface with railroad spike placed inside monument.

Set M.D.O.H. galv. witness post with survey marker sticker and references as shown in diagram.



SKETCH OF CORNER

CERTIFICATION

I, David A. Holst
certify the information shown herein is true and correct.
David A. Holst
Signature Ground Party Chief

I, S. R. Smith
certify that this Corner Record correctly represents work performed by me or under my direction in compliance with the "Corner Recordation Act" (MCA 19-2-401 et seq., MCA 19-2-402).

S. R. Smith
Signature of Surveyor & Seal

Date: 11/89 Reg. No. 47405

Employer: Smith Surveying Co.

Office of Clerk and Recorder, County of Lake. This "corner record" was filed for record on 11:47 AM JUL 3 1'90 325382 was noted on the cross-index plat and is assigned _____, in

C-1750 WILHELMINA LAUGHLIN
County Official
w/c Judy Ann Allen deputy
Cross Index No. N-21 T. 21N R. 20W P.M.M.

