

INSTRUCTIONS

1. Original and subsequent record used to evaluate the corner position.
2. Description of evidence found, note discrepancies in the record, state method of establishing lost or obliterated corners.
3. Description of monument and accessories set to perpetuate the corner position.
4. Sketch of corner, show all pertinent data which can best be shown in a sketch example, corner marking, topography ties, position of accessories, etc.
5. Certification must be signed and sealed by Land Surveyor registered in the State of Montana.
6. Fill in Cross Index & Section Diagram at bottom of sheet.

61-325378

CERTIFIED CORNER RECORDATION

Corner  $\frac{1}{4}$  Corner  $\frac{S24}{S25}$  T. 21N R. 20W P.M.M. Lake County

G.L.O. Record (Raymond C. Trumbull 1905):

Set a slate stone, 12x10x6 ins., 8 ins. in the ground. for  $\frac{1}{4}$  sec. cor., marked  $\frac{1}{4}$  on N. face; dig pits, 18x18x12 ins., E. and W. of stone, 3 ft. dist.; and raise a mound of earth, 3 $\frac{1}{2}$  ft. base,  $\frac{1}{2}$  ft. high, N. of cor.

Subsequent Record (Christopher Balstad Jr. 1974):

Corner record (R-23) shows no evidence of original corner found. Set the  $\frac{1}{4}$  corner by the projection of the fence to the north and the center of the county road east-west. Set 5/8" rebar with plastic cap. Power pole brace post bears northwesterly 26.30 feet. Railroad tie corner post bears southeasterly 38.75 feet.

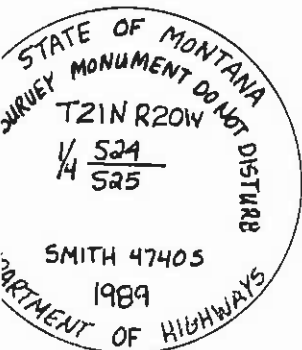
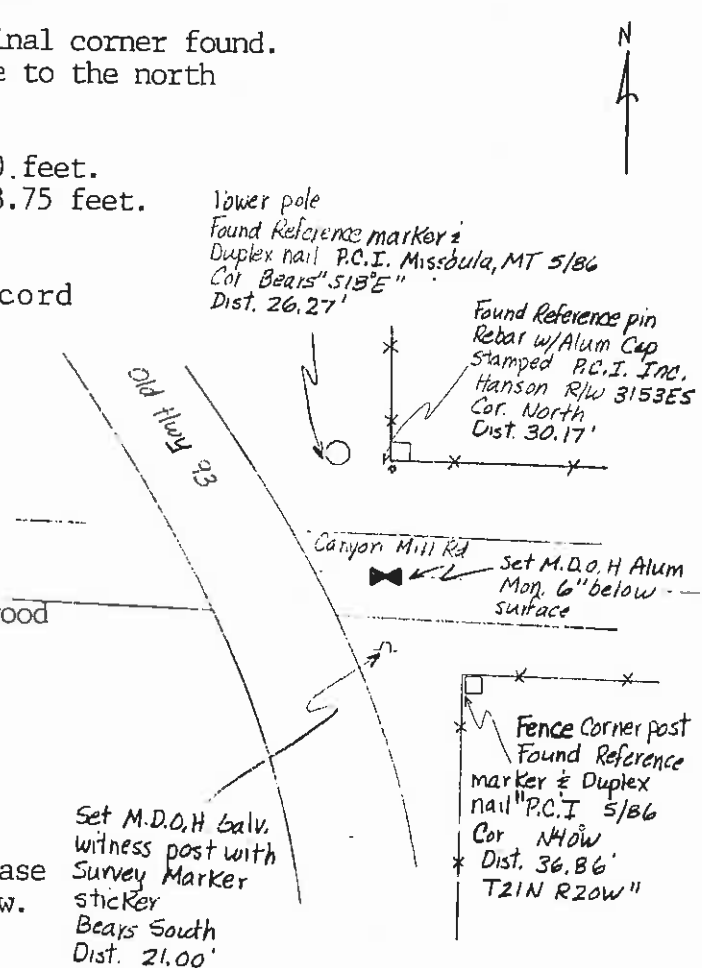
Note: No documentation was found of record for P.C.I. corner references.

Evidence Found:

Found 5/8" rebar with yellow cap (illegible) with references as shown. Evidence of rotted wood at bottom of 2' hole.

Monumentation:

At location of 5/8" rebar with yellow cap, set a standard M.D.O.H. monument, which consists of a 2 $\frac{1}{4}$ " dia. x 30" long aluminum pipe with flared base and 3 $\frac{1}{2}$ " dia. aluminum cap stamped as shown below. Top of cap is buried 6" below surface with 5/8" rebar placed inside monument. Set M.D.O.H. galv. witness post with survey marker sticker and references as shown in diagram.



CERTIFICATION

I, David A. Holst  
 certify the information shown herein is true and correct.  
 Signature of Ground Party Chief: David A. Holst

I, S. R. Smith  
 certify that this Corner Record correctly represents work performed by me or under my direction in compliance with the Corner Recordation Act (70-2-101, et seq., M.C.A.)  
 Signature of Surveyor & Seal: S. R. Smith

Date: 11/89 Reg. No. 47405  
 Employer: Smith Surveying Co.

SKETCH OF CORNER

Office of Clerk and Recorder, County of Lake This "corner record" was filed for record on 11:43 AM JUL 31 '90 was noted on the cross-index plat and is assigned 325378, in

C-1746 County Official  
 Adopted July 1, 1981, Montana Board of Professional Engineers & Land Surveyors  
 Cross Index No. R-23 T. 21N R. 20W P.M.M.

