

INSTRUCTIONS

1. Original and/or subsequent record used to evaluate the corner position.
2. Description of evidence found, note discrepancies in the record, state method of establishing lost or obliterated corners.
3. Description of monument and accessories set to perpetuate the corner position.
4. Sketch of corner, show all pertinent data which can best be shown in a sketch example, corner marking, topography flag, position of accessories, etc.
5. Certification must be signed and sealed by Land Surveyor registered in the State of Montana.
6. Fill in Cross Index & Section Diagram at bottom of sheet.

CERTIFIED CORNER RECORDATION

Corner 1/4 SEC. COR. 7 18 T. 22 N R. 19 W P.M.M. LAKE County

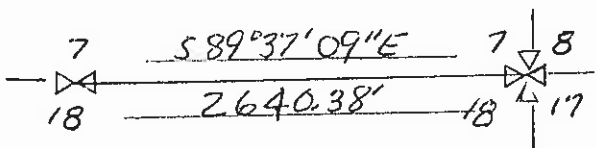
ORIGINAL RECORD: Set a sand stone, 12x7x6 ins., 9 ins. in the ground, for 1/4 sec. cor. marked 1/4 on N. face; from which a pine, 6 ins. dia., bears S. 28 degrees E., 218 lks. dist., marked 1/4 S 18 B T. A pine 6 ins. dia., bears S. 7 degrees, 30 minutes W., 254 lks. dist., marked 1/4 S. 18 B T. (William K. Triplet, United States Deputy Surveyor, 1905).

SUBSEQUENT RECORD: The 1/4 sec. cor. of secs. 7 and 18, determined longitudinally by a fence extending S., and on line bet. controlling cors. There is no remaining evidence of the original monument. At the corner point, set a stainless steel post, 30 ins. long, 2 1/2 ins. dia., 22 ins. in the ground, deposit a magnetic marker at base, in a collar of stone, 4 ft. dia., with a brass cap mkd.

T 22 N R 19 W
S 7
1/4-----
S 18
1995

(Steve L. Toth, Bureau of Land Management Cadastral Surveyor, 1995)

We accept the corner position as established by the Bureau of Land Management as being the best evidence of the 1/4 section corner position. (See also attached copy of a portion of the Bureau of Land Management, 1995, survey notes for additional subsequent records for this corner).



SKETCH OF CORNER

CERTIFICATION

I, _____, certify the information shown herein is true and correct.

Signature Ground Party Chief
LOUIS H. MAILLET

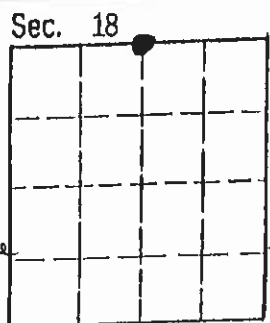
I, _____, certify that this Corner Record correctly represents work performed by me or under my direction in compliance with the "Corner Recordation Act" (70-22-101, et seq., M.C.A.)

Signature of Surveyor & Seal
Louis H. Maillet

Date: 4/24/01 Reg. No. 1826 S

Employer: C.S.&K. TRIBES

Office of Clerk and Recorder, County of LAKE. This "corner record" was filed for record on APR 24 2001 415197 10:48 Am was noted on the cross-index plat and is assigned page No. _____, in book No. _____, in RUTH E. HODGES by Debbie Cole County Official Deputy



Q-2384

Fee n/c

Cross Index No. J-3 T. 22 N R. 19 W P.M.M.

• corner this sheet