

61-

385578

INSTRUCTIONS

1. Original and/or subsequent record used to evaluate the corner position.
2. Description of evidence found, note discrepancies in the record, state method of establishing lost or obliterated corners.
3. Description of monument and accessories set to perpetuate the corner position.
4. Sketch of corner, show all pertinent data which can best be shown in sketch example, corner marking, topography ties, position of accessories, etc.
5. Certification must be signed and sealed by Land Surveyor registered in the State of Montana.
6. Fill in Cross Index & Section Diagram at bottom of sheet.

CERTIFIED CORNER RECORDATION

SOUTH 1/4 SECTION 21

Corner AP 33 PABLO BIRD REFUGE T. 22 N R. 20 W P.M.M. Lake County

RECORD:

1905 - Subdivision of T22N R20W by W.K. Trippet.

1911 - Meanders of North and South Pablo Reservoir by Foster Towle, U.S. Reclamation Service: Found stone 8x5 inches, firmly set, marked and witnessed as described by the U.S.S.G.

1932 - Dependent Resurvey by Tousey and Whitehead, U.S. Biological Survey: Original stone not found. Set 6X10X14 inch stone flush with ground marked with an "+" on top and "BS 33" on south.

1940 - Resurvey by F.S. Forghar, U.S. Biological Survey: No stones found. Set bluestone 15x4x4 13 inches in ground marked with and "+" on top and "BS 33" on south.

1982 - Certificate of Survey 3535, Lake County Clerk and Records Office, shows 1&1/4 inch iron pipe was found, previously "set by Biological Survey 7-17-54".

FOUND:

Sept 7, 1997 - Dependent Resurvey by Morrison-Maierle, Inc. for U.S. Fish & Wildlife Service: Found 1&1/4 inch (inside diameter) iron pipe 31 feet east of fence corner. No stones found. Accept iron pipe as corner. Could not find any documentation of U.S.B.S. survey done in 1954.

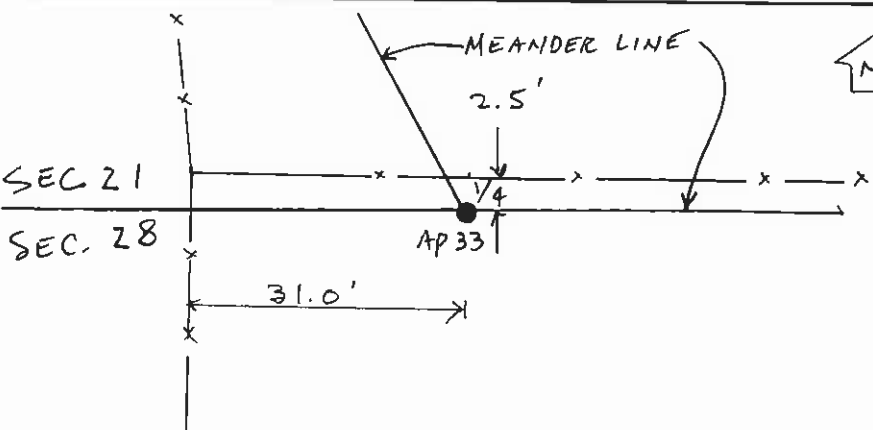
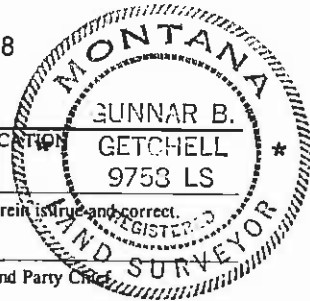
PERPETUATION:

Sept 21, 1997 - Set a 3/4x30 inch aluminum drivable rod with magnetic detachable base 28 inches in the ground set inside the found iron pipe, with a 3&1/4 inch U.S. Fish & Wildlife Service aluminum cap marked:

T22N R20W
AP 33
S.21
1/4-----
S.28
1997

Set carsonite post along north side.

Montana Coordinate System NAD 83 Single Zone, Int. Feet: N = 1272202.0457 E = 819450.2018
Combination Factor to convert grid distance to ground distance: 1.0007037
Control network tied to USC&GS Lake, Jette, and Round Butte.



SKETCH OF CORNER

CERTIFICATION

I, Gunnar B. Getchell
certify the information shown herein is true and correct.

I, _____
Signature Ground Party

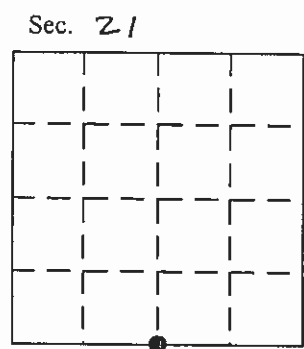
I, Gunnar B. Getchell
certify that this Corner Record correctly represents work performed by me or under my direction in compliance with the "Corner Recordation Act" (70-22-101 et. seq., M.C.A.)

Signature of Surveyor & Seal

Date: 10/1/97 Reg. No. 9758LS

Employer: Morrison-Maierle, Inc.

Office of Clerk and Recorder, County of Lake. This "corner record" was filed for record on OCT 23 1997 at 8:49 AM was noted on the cross-index plat and is assigned page No. 385578, in book No. NC RUTH E. HODGES Gudymur County Official



- corner this sheet

2176

Cross Index No R-11 T 22 N R 20 W P.M.M.