

INSTRUCTIONS

1. Original and/or subsequent record used to evaluate the corner position.
2. Description of evidence found, note discrepancies in the record, state method of establishing lost or obliterated corners.
3. Description of monument and accessories set to perpetuate the corner position.
4. Sketch of corner, show all pertinent data which can best be shown in a sketch example, corner marking, topography ties, position of accessories, etc.
5. Certification must be signed and sealed by Land Surveyor registered in the State of Montana.
6. Fill in Cross Index & Section Diagram at bottom of sheet.

CERTIFIED CORNER RECORDATION

¼ Corner Sections 10 & 15 T. 22 N. R. 20 W. P.M.M. Lake County

ORIGINAL RECORD: (1906 G.L.O.)  
 Set a sand stone, 14" X 10" X 8", 8" in the ground for ¼ sec. cor., marked ¼ on W. face; dig pits, 18" X 18" X 12", N. and S. of stone, 3' dist.; and raise a mound of earth, 3 ½' base, 1 ½' high, W. of cor.

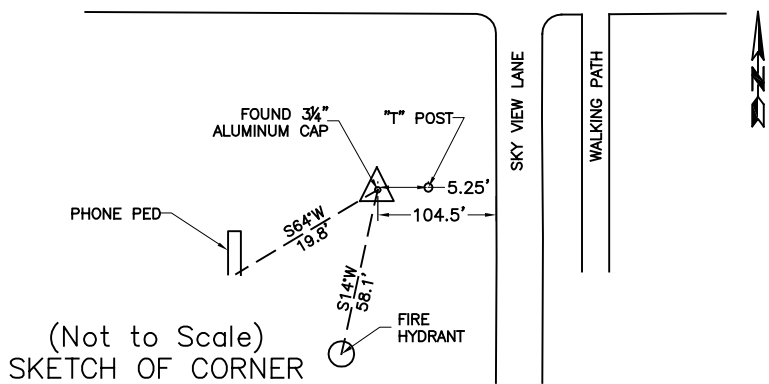
SUBSEQUENT RECORD: (Maillet 1995: Recordation Form #366975)  
 "No evidences of the original stone, as indicated as being in place, on the plat of Skyline Addition No. 3. The position of this corner, according to the lot corner monuments for Park I, said Skyline Addition No. 3, is now occupied by an existing fence corner. No new monuments were set. The lot corner monuments in Skyline Addition No. 3 serve as reference monuments for this corner."

EVIDENCE FOUND: Found 3 ¼" Brass Cap, flush with ground.  
 A fire hydrant bears S14°W, a distance of 58.1 feet  
 A telephone pedestal bears S64°W, a distance of 19.8 feet.  
 Corner lies 5.25 feet west of a "T" post and 104.5 feet west of Sky View Lane.

PERPETUATION: Left monument as found.  
 Date of Survey: October, 2010.



NAD 83 coordinates for this corner:  
 Latitude = 47°40'28.87"N Longitude = 114°08'43.65"W  
 NOTE: These coordinates are to be used as a search tool only.



CERTIFICATION

I, Steve Cummings  
 certify the information shown herein is true and correct.

\_\_\_\_\_  
 Signature Ground Party Chief

I, Kurt A. Luebke  
 certify that this Corner Record correctly represents work performed by me or under my direction in compliance with the "Corner Recordation Act" (70-22-101, et seq., M.C.A.)

\_\_\_\_\_  
 Signature of Surveyor & Seal

Date: 11-22-2010 Reg. No. 13237 S  
 Employer: DJ&A P. C.

