

INSTRUCTIONS

61-314985

1. Original and/or subsequent record used to evaluate the corner position.
2. Description of evidence found, note discrepancies in the record, state method of establishing lost or obliterated corners.
3. Description of monument and accessories set to perpetuate the corner position.
4. Sketch of corner, show all pertinent data which can best be shown in a sketch example, corner marking, topography ties, position of accessories, etc.
5. Certification must be signed and sealed by Land Surveyor registered in the State of Montana.
6. Fill in Cross Index & Section Diagram at bottom of sheet.

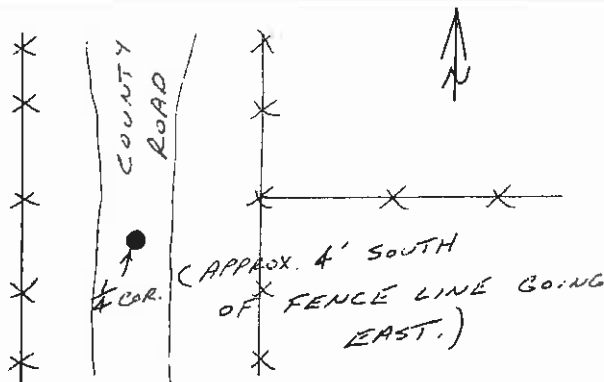
**CERTIFIED CORNER RECORDATION**

Corner 1/4 COMMON TO SECS. T. 22N. R. 20W. P.M.M. LAKE County  
34 & 35

RECORD : QUARTZITE STONE 14x8x8 ins., 24 ins. IN THE GROUND, MKD. 1/4 ON W. FACE AND + ON TOP FOR 1/4 COR. SECS. 34 AND 35. POINT FALLS IN TRAVELED ROAD. N. 89° 56' E., DIST. 0.45 CHS. FROM TRUE POINT FOR 1/4 COR. SECS. 34 AND 35 SET A SANDSTONE 15x7x5 ins., 12 ins. IN THE GROUND FOR WITNESS COR., MKD. WC 1/4.

EVIDENCE : NO ORIGINAL EVIDENCE OR SUBSEQUENT EVIDENCE FOUND.

SET : 5/8" DIA. REBAR W/ PLASTIC CAP STAMPED "RLS 9012." CORNER SET 0.3' BELOW SURFACE OF COUNTY ROAD.



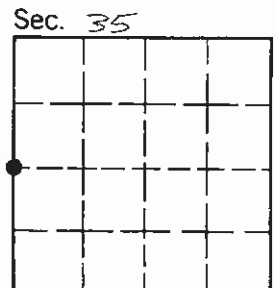
CERTIFIED AND REGISTERED  
 I, Gregory B. Marengo  
 certify the information shown herein is true.  
 Signature Ground Party Chief  
 I, Gregory B. Marengo  
 certify that this Corner Record correctly represents work performed by me or under my direction in compliance with the "Corner Recordation Act" (70-22-101, et seq., M.C.A.)  
Gregory B. Marengo  
 Signature of Surveyor & Seal  
 Date: 10/17/88 Reg. No. 9012-S  
 Employer: \_\_\_\_\_

Office of Clerk and Recorder, County of Lake. This "corner record" was filed for record on October 25, 1988 at 2:38 p.m.

was noted on the cross-index plat and is assigned microfile 314985, in

FILE No. C-1622  
 MC

Lain Jacobsen  
 County Official



Cross Index No. X-17 T. 22N. R. 20W. P.M.M.

• - corner this sheet