

INSTRUCTIONS

Q:CO-STD/152
Created 4/8/92

1. Original and/or subsequent record used to evaluate the corner position.
2. Description of evidence found, note discrepancies in the record, state method of establishing lost or obliterated corners.
3. Description of monument and accessories set to perpetuate the corner position.
4. Sketch of corner, show all pertinent data which can best be shown in a sketch example, corner marking, topography ties, position of accessories,
5. Certification must be signed and sealed by Land Surveyor registered in the State of Montana.
6. Fill in Cross Index & Section Diagram at bottom of sheet.

CERTIFIED CORNER RECORDATION

Corner 1/4 of Secs. 36 & 1 T. 22N R. 30 West P.M.M. Sanders County

RECORD

GLO 1889 Set a post, 3 ft. long, 4" square, 24" in the ground, with 1/4 on the N. face.
From which:
A 10" Fir, bears N 07°30' E, 9 links dist., marked: "1/4 S36 BT."
A 8" Fir, bears S 01° W, 9 links dist., marked: "1/4 S1 BT."

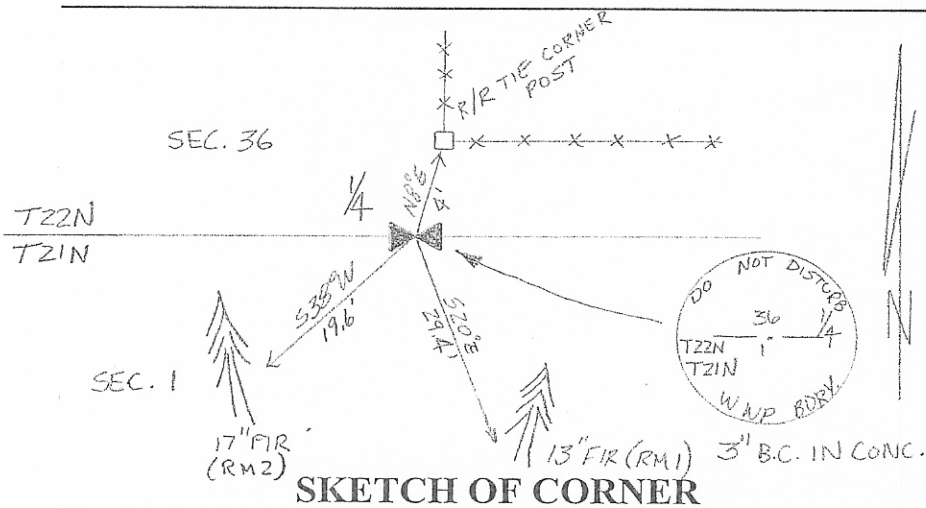
FOUND

2001 Found 3" diameter brass disc set in concrete (W.W.P.), with a carsonite post 6" E. of the corner, with "LS 5616" at the top of the post.

From which (2) new BT's:
A 13" Fir, bears S 20° E, 29.4 ft., marked: RM1.
A 17" Fir, bears S 38° W, 19.6 ft., marked: RM2.

Paint, blaze, and tag bearing trees. A R/R tie fence corner bears N 8° E, 4 ft. dist.
Fences bear N. & E.

See Certificate of Survey on file at the Sanders County Courthouse.



CERTIFICATION
I, Kevin Cassidy
certify the information shown herein is true and correct.
Kevin Cassidy
Signature Ground Party Chief
I, R.A. Ainsworth
certify that this Corner Record correctly represents work performed by me or under my direction in compliance with the "Corner Recordation Act" (70-22-101, et seq., M.C.A.)
R.A. Ainsworth
Signature of Surveyor & Seal
Date: 8/01 Reg. No. 2923S
Employer: Professional Consultants, Inc.

Sec.36

254626 BOOK: 5 CORNER REC PAGE: 35 Pages: 0
STATE OF MONTANA SANDERS COUNTY
RECORDED: 03/02/2004 9:43 KOI: COR RECORD
PAT INGRAHAM CLERK AND RECORDER
FEE: \$0.00 BY: R.A. Ainsworth
TO: PROFESSIONAL CONSULTANTS, INC. P.O. BOX 1750, MISSOULA, MT
