

INSTRUCTIONS

Q:CO-STD/152
Created 4/8/92

1. Original and/or subsequent record used to evaluate the corner position.
2. Description of evidence found, note discrepancies in the record, state method of establishing lost or obliterated corners.
3. Description of monument and accessories set to perpetuate the corner position.
4. Sketch of corner, show all pertinent data which can best be shown in a sketch example, corner marking, topography ties, position of accessories,
5. Certification must be signed and sealed by Land Surveyor registered in the State of Montana.
6. Fill in Cross Index & Section Diagram at bottom of sheet.

CERTIFIED CORNER RECORDATION

Corner 1/4 of Secs. 25 & 36 T. 22N R. 30 West P.M.M. Sanders County

RECORD

GLO 1889 Set a post, 3 ft. long, 4" square, 24" in the ground, with 1/4 on the N. face.
From which:
A 18" Pine, bears N 03°30' W, 96 links dist., marked: "1/4 S25 BT."
A 14" Tamarack, bears S 78°30' W, 48 links dist., marked: "1/4 S36 BT."

1998, 2734S COS 1922. Found fence corner, accepted as the N. 1/4 corner as shown on COS 98 43, & 138.

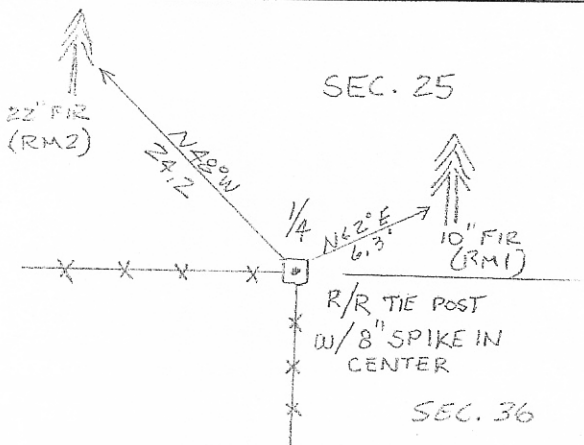
FOUND

2001 Found R/R tie fence corner at the intersection of fences bearing W. & S. Set an 8" spike in the top, center of the post for the point for the 1/4 corner of sections 25 & 36.

From which:
A 10" Fir, bears N 62° E, 6.3 ft., marked: RM1.
A 22" Fir, bears N 48° W, 24.2 ft., marked: RM2.

Paint, blaze, and tag bearing trees and set a steel MDOT witness post 2 ft. N. of the corner.

See Certificate of Survey on file at the Sanders County Courthouse.



SKETCH OF CORNER

CERTIFICATION

I, Kevin Cassidy
certify the information shown herein is true and correct.

Kevin Cassidy
Signature Ground Party Chief

I, R.A. Ainsworth
certify that this Corner Record correctly represents work performed by me or under my direction in compliance with the "Corner Recordation Act" (70-22-101 et seq., M.C.A.)

R.A. Ainsworth
Signature of Surveyor & Seal

Date: 8/01 Reg. No. 29238

Employer: Professional Consultants, Inc.

Sec.36

254622 BOOK: 5 CORNER REC PAGE: 31 Pages: 0
STATE OF MONTANA SANDERS COUNTY
RECORDED: 03/02/2004 9:23 KOI: COR RECORD
PAT INGRAHAM CLERK AND RECORDER
FEE: \$0.00 BY: *R.A. Ainsworth*
TO: PROFESSIONAL CONSULTANTS, INC. P.O. BOX 1750, MISSOULA, MT