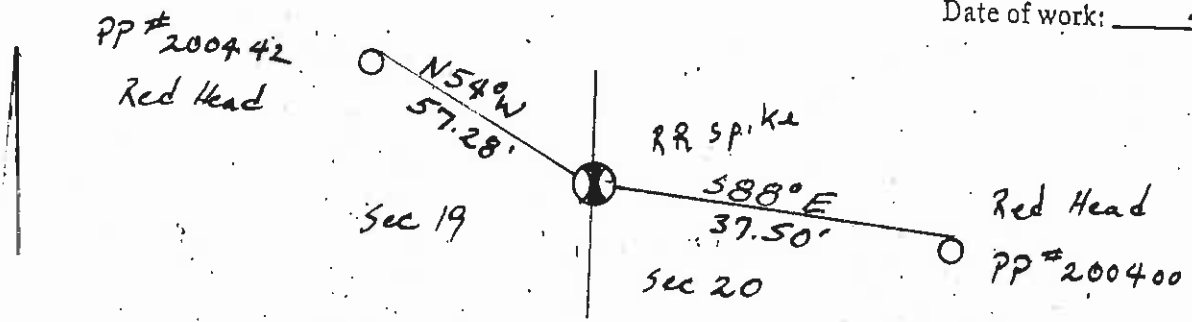


DESCRIPTION OF CORNER EVIDENCE FOUND, AND ORIGINAL RECORD (IF KNOWN)

End RR spike for E 1/4 Cor Sec 19 T23N R 19W
6" below surface on the west edge of the pavement

DESCRIPTION OF MONUMENT AND ACCESSORIES ESTABLISHED TO PERPETUATE THE ORIGINAL LOCATION OF THIS CORNER:

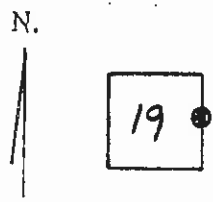
Date of work: 2/85



SKETCH, WITH COURSE AND DISTANCE TO ADJACENT CORNERS IF DETERMINED IN THIS SURVEY. (MAY SKETCH OR PASTE REPRODUCTION ON REVERSE SIDE.)

See Reverse Side

DIAGRAM OF CORNER:



Surveyor's Seal

I, Bryan B. Block
certify that the information shown herein is true and correct.
Bryan B. Block
Signature of Ground Party Chief

I, C. W. Doyle
certify that I have carefully performed or reviewed the work done on the diagrammed corner as reported on this recordation form and approve the same.
C. W. Doyle
Signature of Surveyor

E/4 = Corner recorded on the sheet

2516-5
Registration Number

Office of Clerk and Recorder, County of Lake, State of Montana

This "corner record" was filed for record on the 25th day of February 1985 at 9:37 A.M.
Signed microfile No. 288099 in File No. C-1411

LORIN JACOBSON, CLERK & RECORDER
By Wynne Cooper, County Official Deputy

Alson Villa Site

