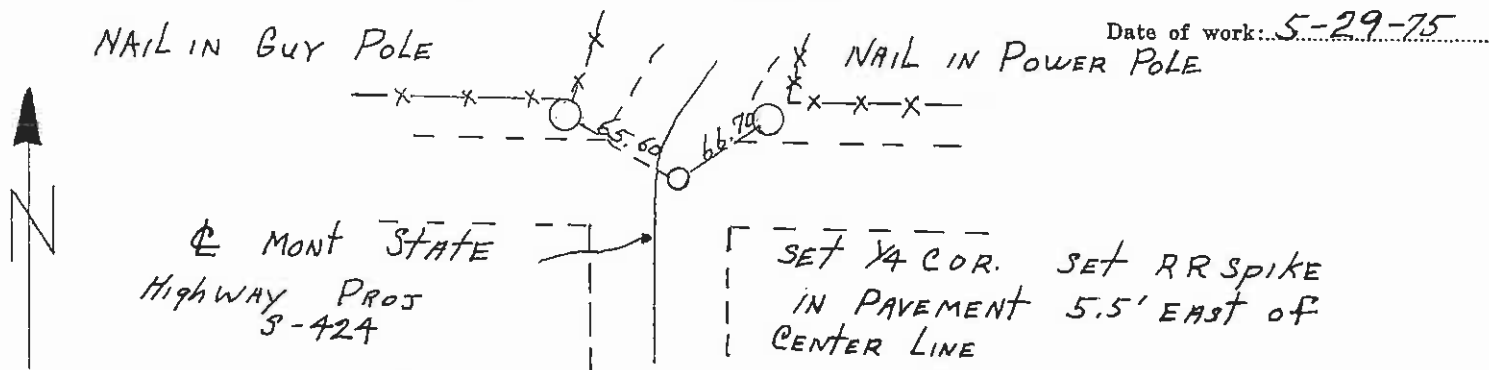


CERTIFIED LAND CORNER RECORDATION

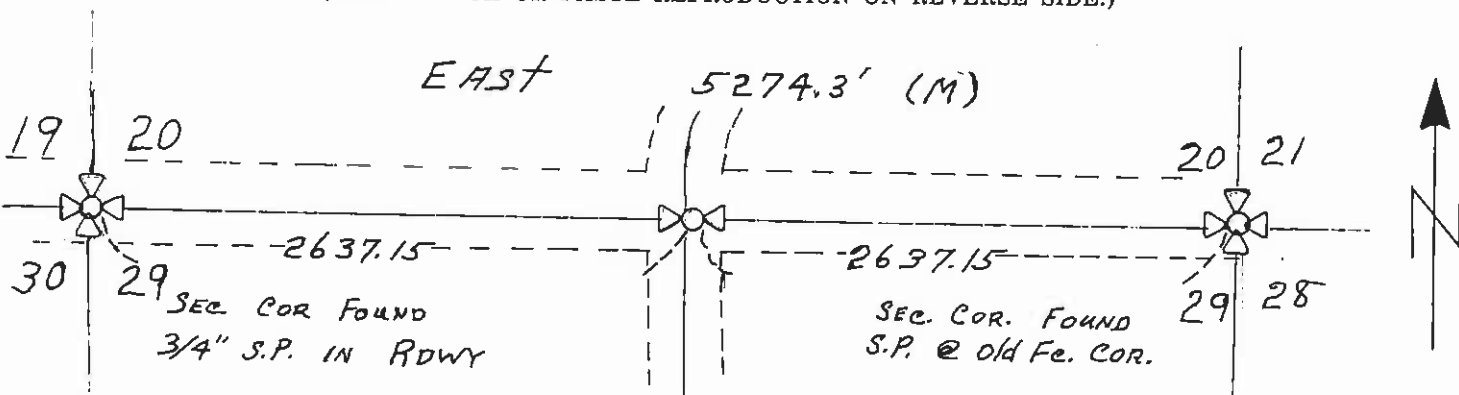
DESCRIPTION OF CORNER EVIDENCE FOUND, AND ORIGINAL RECORD (IF KNOWN)

NO EVIDENCE OF ORIGINAL CORNERS AND ACCESSORIES DESTROYED BY THE CONSTRUCTION OF ROADS

DESCRIPTION OF MONUMENT AND ACCESSORIES ESTABLISHED TO PERPETUATE THE ORIGINAL LOCATION OF THIS CORNER:



SKETCH, WITH COURSE AND DISTANCE TO ADJACENT CORNERS IF DETERMINED IN THIS SURVEY. (MAY SKETCH OR PASTE REPRODUCTION ON REVERSE SIDE.)



Surveyor's Seal

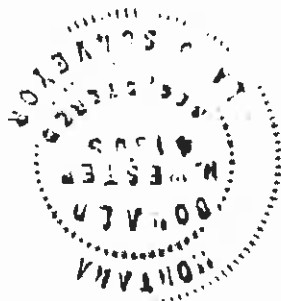
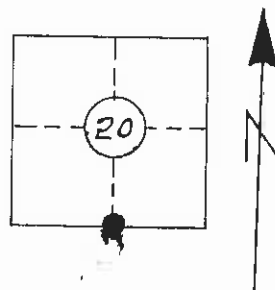
I, DONALD H. WESTER certify that the information shown herein is true and correct.

Signature of Ground Party Chief

I, certify that I have carefully performed or reviewed the work done on the diagrammed corner as reported on this recordation form and approve the same.

Signature of Surveyor

DIAGRAM OF CORNER: T23N R20W



4130 S Registration Number

ice of Clerk and Recorder; County of Lake, State of Montana s "corner record" was filed for record on the 9th day of JANUARY 1976 at 8:26 o'clock A.M.

igned page No. 225280, in book No. C-625

Ethel M. Harding, Clerk and Recorder County Official W. Wilcox, Dep

Cross Index No. R-7 T. 23N R. 20W Mer.