

INSTRUCTIONS

1. Original and/or subsequent record used to evaluate the corner position.
2. Description of evidence found, note discrepancies in the record, state method of establishing lost or obliterated corners.
3. Description of monument and accessories set to perpetuate the corner position.
4. Sketch of corner, show all pertinent data which can best be shown in a sketch example, corner marking, topography ties, position of accessories, etc.
5. Certification must be signed and sealed by Land Surveyor registered in the State of Montana.
6. Fill in Cross Index & Section Diagram at bottom of sheet.

9209

CERTIFIED CORNER RECORDATION

Corner E. 1/4 cor. Section 19 T. 24N R. 4W P.M.M. Teton County

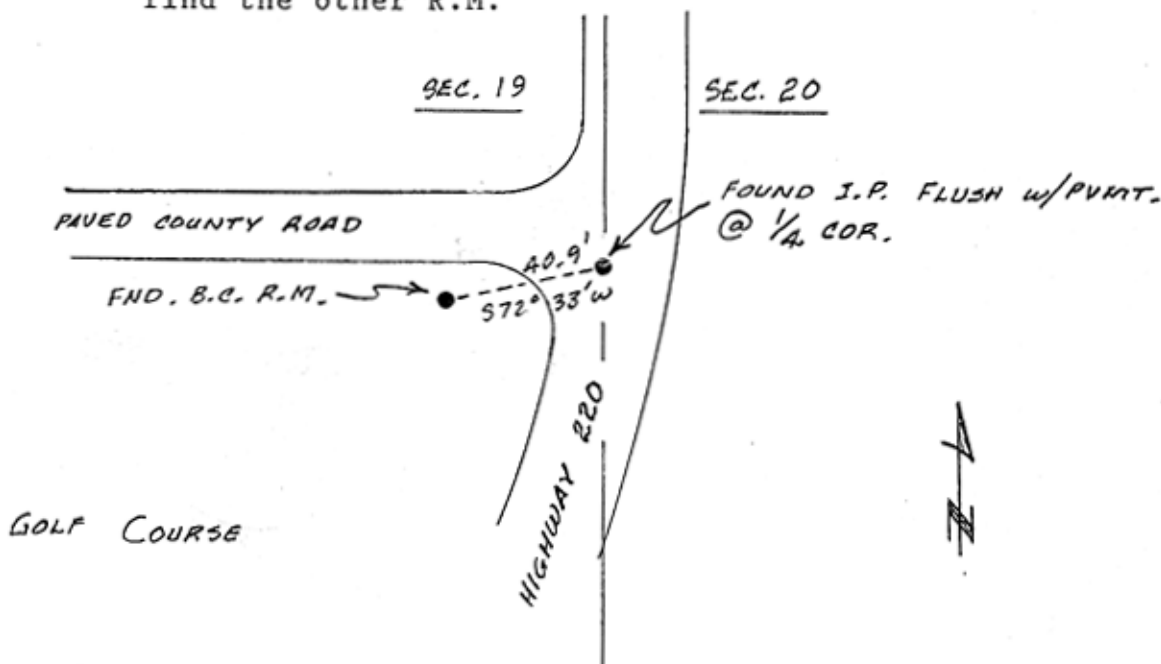
RECORD: 1955 Dep. Resurvey - Set 1 in. T-iron stake, 24 ins. long
7 ins. below surf....

from which

30 ins. iron post with brass caps were set as ref. monuments S723/4°E, 27.3 ft. and S61/4°W, 35.4 ft. with arrows pointing to cor.

Mont. Hwy. Dept. plans for Highway No. 220 show that they removed the T-iron stake during construction and replaced it with an iron pin after completion of project.

FOUND: A 7/8"± dia. iron pin flush in highway pavement with a brass cap ref. mon. S72°33'W, 40.9 ft. from cor. Brass cap is marked "S 21, 40.8 ft" with arrow pointing to cor. The S 21 should read S 19. It appears R.M. has been hit by something, and could be slightly disturbed. We did not find the other R.M.



Sur. March, 1992.

SKETCH OF CORNER

CERTIFICATION

I, _____ certify the information shown herein is true and correct.

Signature Ground Party Chief

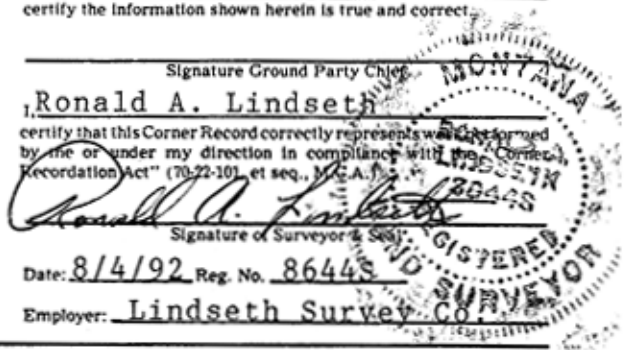
Ronald A. Lindseth

certify that this Corner Record correctly represents what was performed by me or under my direction in compliance with the "Corner Recordation Act" (70-22-101, et seq., M.C.A.)

Signature of Surveyor & Seal

Date: 8/4/92 Reg. No. 8644S

Employer: Lindseth Survey Co.



Office of Clerk and Recorder, County of Teton. This "corner record" was filed for record on _____ was noted on the cross-index plat and is assigned page No. _____, in book No. _____

County Official

Cross Index No. P 5 T. 24N R. 4W P.M.M.

