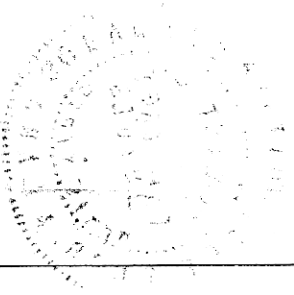


CERTIFIED LAND CORNER RECORDATION

DESCRIPTION OF CORNER EVIDENCE FOUND, AND ORIGINAL RECORD (IF KNOWN)

Found USCS Tee iron at road intersection.
 USCS Bronze monument SW of corner bent over.
 " " " SE of corner in place.



DESCRIPTION OF MONUMENT AND ACCESSORIES ESTABLISHED
 TO PERPETUATE THE ORIGINAL LOCATION OF THIS CORNER:

Accessories: Found USCS Bronze monument S45°E 37.71'. Date of work: 8/28/1980

Set 1/2"Ø x 12" rebar North 29.09 feet.

Set nail & disc in fence Post S45°W 46.07 feet.

SKETCH, WITH COURSE AND DISTANCE TO ADJACENT CORNERS IF DETERMINED IN THIS SURVEY.
 (MAY SKETCH OR PASTE REPRODUCTION ON REVERSE SIDE.)

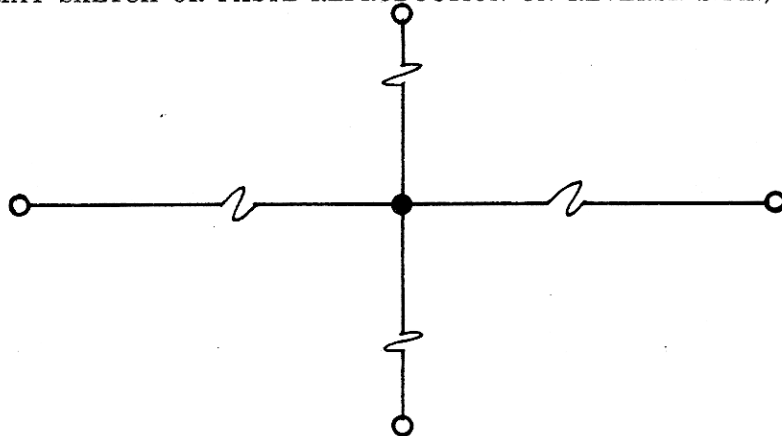
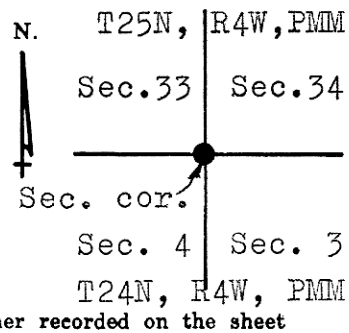


DIAGRAM OF CORNER:



Surveyor's Seal

I,,
 certify that the information shown herein is true and
 correct.

Signature of Ground Party Chief

I, Robert E. Findorff
 certify that I have carefully performed or reviewed the
 work done on the diagrammed corner as reported on this
 recordation form and approve the same.

Robert E. Findorff
 Signature of Surveyor Robert E. Findorff

3976 ES.....
 Registration Number



Office of Clerk and Recorder, County of.....

This "corner record" was filed for record on the day of 19....., was noted on the cross-index plat and is
 assigned page No....., in book No.....

County Official

Cross Index No. Z-13 T. 25 N R. 4W Mer.
A-13 24 N 4W