

INSTRUCTIONS

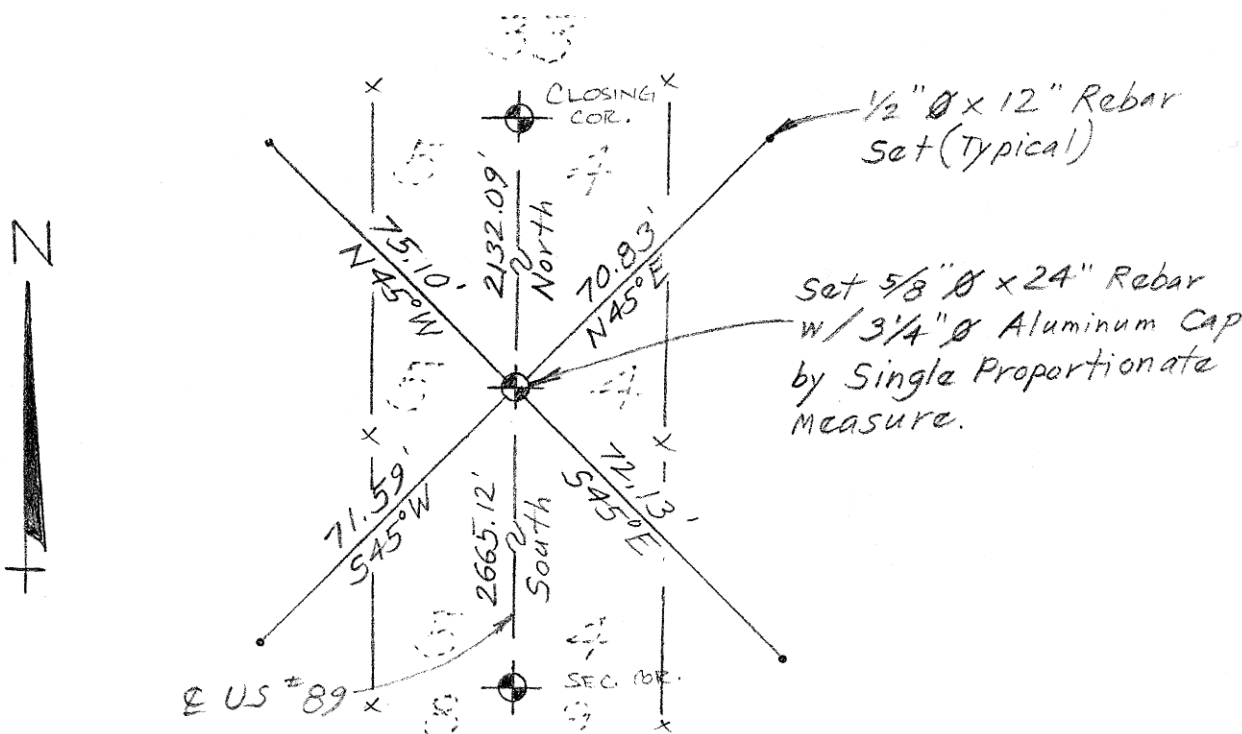
1. Original and/or subsequent record used to evaluate the corner position.
2. Description of evidence found, note discrepancies in the record, state method of establishing lost or obliterated corners.
3. Description of monument and accessories set to perpetuate the corner position.
4. Sketch or corner, show all pertinent data which can best be shown in a sketch example, corner marking, topography ties, position of accessories, etc.
5. Certification must be signed and sealed by Registered Land Surveyor in State of Montana.
6. Fill in Cross Index & Section Diagram at bottom of sheet.

CERTIFIED CORNER RECORDATION

Corner Sec. 4 & 5 (1/4 corner) T. 24N R. 5W P.M.M. Teton County

Evidence Found: None. Corner set by single proportionate measure using closing corner 1/2 mile north and section corner 1/2 mile south. Set 5/8"Ø x 24" rebar w/ 3/4"Ø aluminum cap at corner location.

Accessories: Set 1/4"Ø x 12" rebar N45°E 70.83 feet.
 Set 1/4"Ø x 12" rebar S45°E 72.13 feet.
 Set 1/4"Ø x 12" rebar S45°W 71.59 feet.
 Set 1/4"Ø x 12" rebar N45°W 75.10 feet.

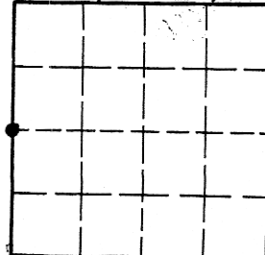


SKETCH OF CORNER (See Above)

CERTIFICATION
 I, Dennis D. Findorff
 certify the information shown herein is true and correct.
 Signature Ground Party Chief
 I, Robert E. Findorff
 certify that this Corner Record correctly represents work performed by me or under my direction in compliance with the Corner Recordation Act, 170-101, et seq., M.C.A.
 Signature of Surveyor & Seal
 Date: 11/17/83 Reg. No. 39765
 Employer: Robert E. Findorff & Assoc.

Office of Clerk and Recorder, County of _____ . This "corner record" was filed for record on the _____ day of 19 _____, was noted on the cross-index plat and is assigned page No. _____, in book No. _____

Sec. 4, T24N, R5W



County Official

Cross Index No. C-9 T. _____ R. _____ P.M.M.

• - corner this sheet

C-9

8363