

CERTIFIED LAND CORNER RECORDATION

DESCRIPTION OF CORNER EVIDENCE FOUND, AND ORIGINAL RECORD (IF KNOWN)

No evidence found.

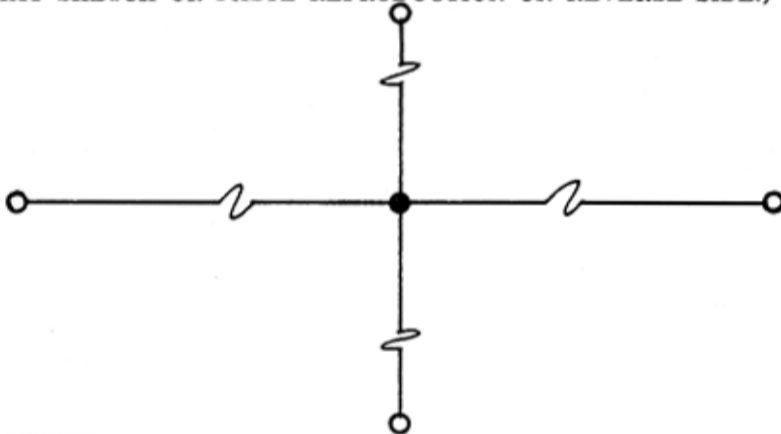
DESCRIPTION OF MONUMENT AND ACCESSORIES ESTABLISHED
TO PERPETUATE THE ORIGINAL LOCATION OF THIS CORNER:

Corner set by $\frac{5}{8}$ " \emptyset x 24" rebar w/cap at corner location.

Date of work: 2/2/76

Accessories: ~~Set $\frac{1}{2}$ " \emptyset x 12" rebar North 10.00 feet.~~
Set $\frac{1}{2}$ " \emptyset x 12" rebar North 10.00 feet.
Set $\frac{1}{2}$ " \emptyset x 12" rebar West 10.00 feet.

SKETCH, WITH COURSE AND DISTANCE TO ADJACENT CORNERS IF DETERMINED IN THIS SURVEY.
(MAY SKETCH OR PASTE REPRODUCTION ON REVERSE SIDE.)



Surveyor's Seal



I, _____
certify that the information shown herein is true and correct.

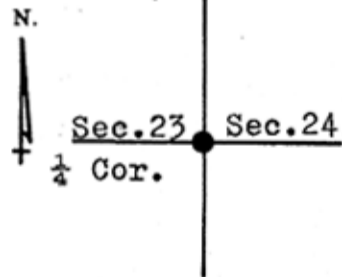
Signature of Ground Party Chief

I, Robert E. Findorff
certify that I have carefully performed or reviewed the work done on the diagrammed corner as reported on this recordation form and approve the same.

Robert E. Findorff
Signature of Surveyor Robert E. Findorff

3976 ES
Registration Number

DIAGRAM OF CORNER:
T24N, R5W, MPM



● = Corner recorded on the sheet

Office of Clerk and Recorder, County of Seton

323865

This "corner record" was filed for record on the 12th day of July 1976, was noted on the cross index plat and is assigned page No. _____, in book No. _____

By: Mary N. Baker
County Official