

INSTRUCTIONS

1. Original and/or subsequent record used to evaluate the corner position.
2. Description of evidence found, note discrepancies in the record, state method of establishing lost or obliterated corners.
3. Description of monument and accessories set to perpetuate the corner position.
4. Sketch of corner, show all pertinent data which can best be shown in a sketch example, corner marking, topography ties, position of accessories, etc.
5. Certification must be signed and sealed by Land Surveyor registered in the State of Montana.
6. Fill in Cross Index & Section Diagram at bottom of sheet.

CERTIFIED CORNER RECORDATION

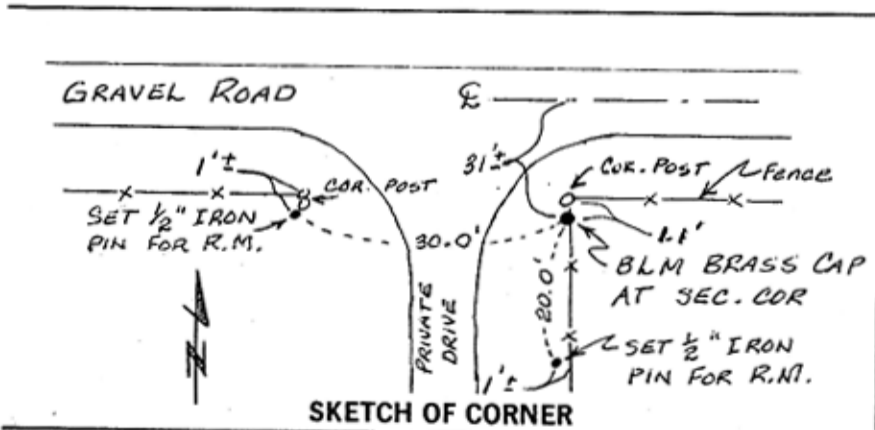
Corner Southwest corner Section 13, T. 24N, R. 5W, P.M.M. Teton County

BLM notes show : " Set an iron post 30 ins. long, 2½ ins. diam., 28 ins. in the ground with brass cap mkd.

T24N R5W
 s 14 | s 13
 s 23 | s 24
 1955

This survey found a brass cap as described, buried 2 ins. approx., by a fence corner. We set reference monuments as shown below.

Date of Survey: August - Sept., 1987.



CERTIFICATION

I, _____
 certify the information shown herein is true and correct.

Signature Ground Party Chief
 1. Ronald A. Lindseth
 certify that this Corner Record correctly represents work performed by me or under my direction in compliance with the "Corner Recordation Act" (70-22-101) of the M.C.A.

Ronald A. Lindseth
 Signature of Surveyor & Seal

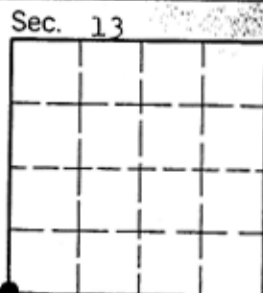
Date: 9/18/87 Reg. No. 86445

Employer: Self

Office of Clerk and Recorder, County of Teton. This "corner record" was filed for record on _____ was noted on the cross-index plat and is assigned page No. _____, in book No. _____

County Official

Cross Index No. _____ T. 24N R. 5W P.M.M.



• - corner this sheet

N-21