

CERTIFIED LAND CORNER RECORDATION

DESCRIPTION OF CORNER EVIDENCE FOUND, AND ORIGINAL RECORD (IF KNOWN)

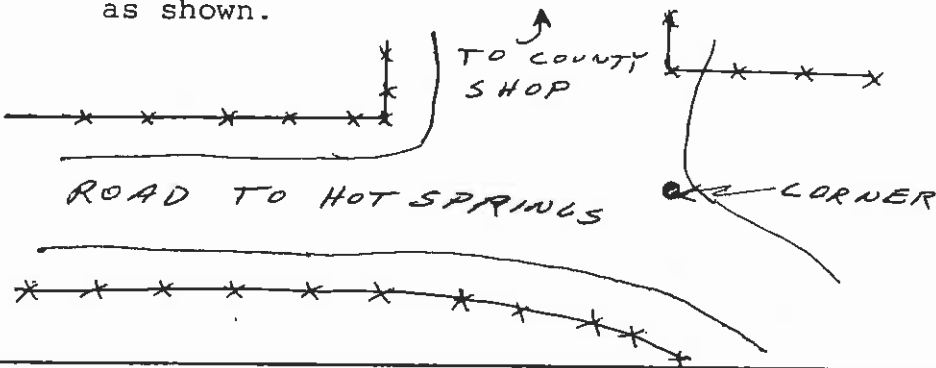
RECORD: (1904 GLO) Set a trap rock 14 x 10 x 6 ins. 10 ins. in the ground for the corner of sections 13, 18, 19, 24 marked with 3 notches on N. and S. edges and raise a mound of stone 2 ft. base, 1 1/4 ft. high W. of corner.

FOUND: No original evidence found. Found a railroad spike believed to have been set off highway ties.

DESCRIPTION OF MONUMENT AND ACCESSORIES ESTABLISHED TO PERPETUATE THE ORIGINAL LOCATION OF THIS CORNER:

SET: No additional accessories set. Corner located as shown.

Date of work: 2/80



SKETCH, WITH COURSE AND DISTANCE TO ADJACENT CORNERS IF DETERMINED IN THIS SURVEY. (MAY SKETCH OR PASTE REPRODUCTION ON REVERSE SIDE.)

See Reverse Side.

Surveyor's Seal

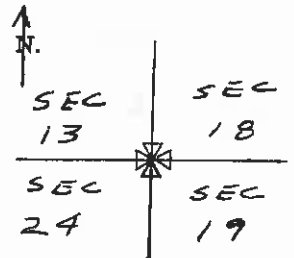
I, Bryan Smith, certify that the information shown herein is true and correct.

Signature of Bryan Smith, Signature of Ground Party Chief

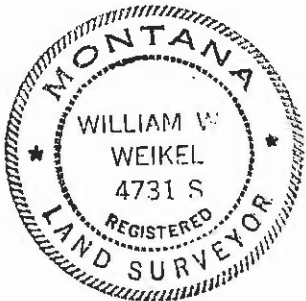
I, William W. Weikel, certify that I have carefully performed or reviewed the work done on the diagrammed corner as reported on this recordation form and approve the same.

Signature of William W. Weikel, Signature of Surveyor

DIAGRAM OF CORNER:



T. 24 N. R. 22 W. = Corner recorded on the sheet



4731 S Registration Number

Office of Clerk and Recorder, County of Lake, State of Montana

This "corner record" was filed for record on the 27th day of JUNE 1980, at 9:10 A.M.

assigned No. 255519, in book No. C-1044. Ethel M. Harding, Lake County Clerk & Recorder. By: Gloria L. Wilson, Deputy County Official.

