

1. Original stone monument should be shown in drawing the corner position.
2. Description of evidence found, note discrepancies in the record.
3. Description of monument and accessories set to perpetuate the corner position.
4. Sketch of corner, show all pertinent data.
5. Certification must be signed and sealed by Land Surveyor licensed in the State of Montana.
6. Fill in index information and show the corner's approximate location within the section diagram.

493962

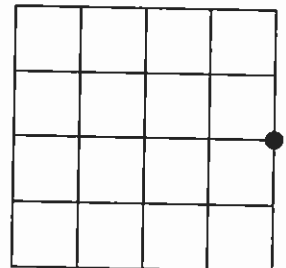
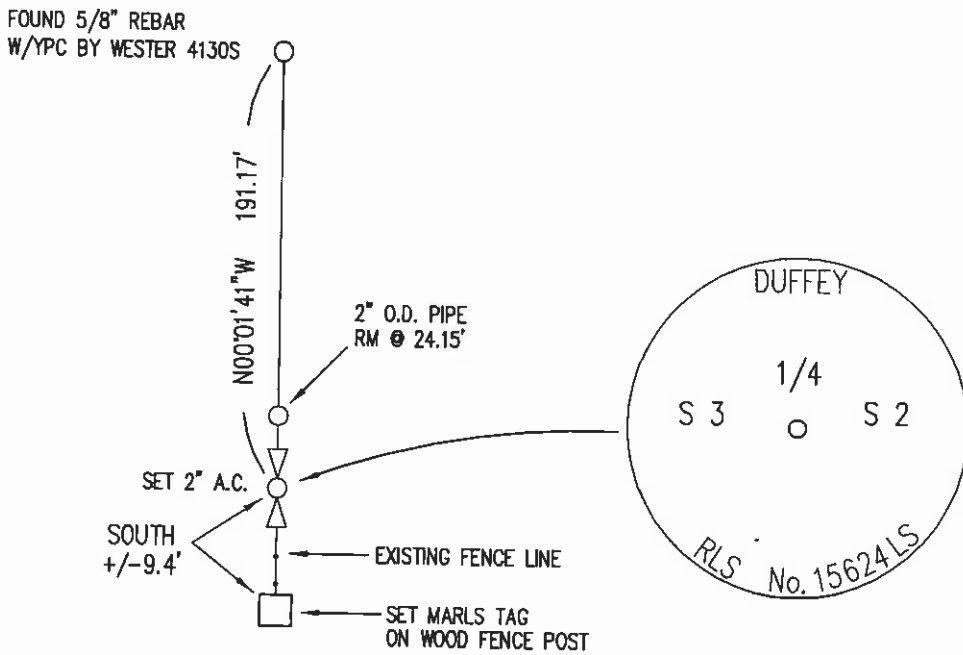
CERTIFIED CORNER RECORDATION

Corner: 1/4 Corner Sections 2 & 3 T. 24N R. 21W P.M.M. Lake County

ORIGINAL RECORD: G.L.O. record not researched. Original stone found and noted on various surveys in Sections 2 & 3.

EVIDENCE FOUND: No evidence of original stone found.

PERPETUATION: Using found monuments and record data from COS 5087 and SP-88 I set a 2 inch Aluminum Cap with MARLS tag as shown below.



SKETCH: show enough information to clearly identify the corner (use back if needed).

● Location in Sec. 3

Office of Clerk and Recorder, County of Lake

This "Corner Record" (Survey of Record) was filed for record on Nov 26 2008 @ 12:05 P was noted on the Cross Index Plat or listed in the Survey of Record Index and is assigned:

Page No. _____

in Book No. 493962

and/or Doc. No. RUTH E. HODGES

County Official [Signature]

Certifications

I, John M. Duffey certify that the work represented herein was faithfully performed.

Signature of Ground Party Chief

[Signature]
Signature of Surveyor & Seal

Date: 11/25/2008 Lic. No. 15624LS

Employer: Duffey Land Surveying

C-2784