

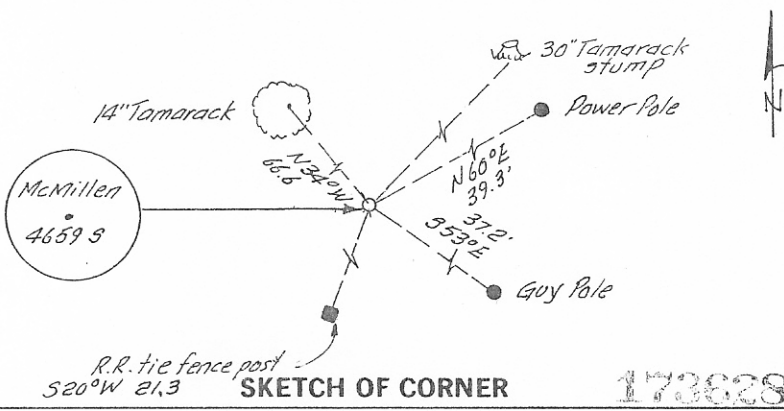
INSTRUCTIONS

1. Original and/or subsequent record used to evaluate the corner position.
2. Description of evidence found, note discrepancies in the record, state method of establishing lost or obliterated corners.
3. Description of monument and accessories set to perpetuate the corner position.
4. Sketch of corner, show all pertinent data which can best be shown in a sketch example, corner marking, topography ties, position of accessories, etc.
5. Certification must be signed and sealed by Registered Land Surveyor in State of Montana.
6. Fill in Cross Index & Section Diagram at bottom of sheet.

CERTIFIED CORNER RECORDATION

Corner N.E. Cor. Sec. 30 T. 24 N. R. 31 W. P.M.M. Sanders County

- I. Set a post, 4 ft. long, 4 ins. sq., 24 ins. in the ground for Cor. to Secs. 19, 20, 29 and 30, marked:
 T24N S20 on N.E., R31W S29 on S.E., S30 on S.W. and S19 on N.W. faces, with 2 notches on S. and 5 notches on E. edges, from which:
 A tamarack, 30 ins. diam., bears N. 44° E., 53 lks. dist., marked T24N R31W S20 BT
 A tamarack, 20 ins. diam., bears S. 10° E., 66 lks. dist., marked T24N R31W S29 BT
 A fir, 10 ins. diam., bears S. 29° W., 60 lks. dist., marked T24N R31W S30 BT
 A tamarack, 32 ins. diam., bears N. 20° W., 18 lks. dist. marked T24N R31W S19 BT
- II. A 30 in. tamarack stump bears N. 44° E., 34.98 ft.
 The other bearing trees were destroyed by road construction.
- III. AT THE CORNER POINT:
 Set 1/2 in. rebar, with cap marked 4659S, 6 ins. below road surface, from which:
 A power pole, with BT tag, bears N. 60° E., 39.3 ft.
 A guy pole, with BT tag, bears S. 53° E., 37.2 ft.
 A R.R. tie fence post, with BT tag, bears S. 20° W., 21.3 ft.
 A 14 in. tamarack, with BT tag, bears N. 34° W., 66.6 ft.



CERTIFICATION

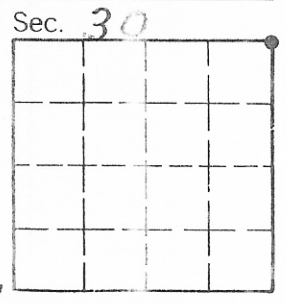
I. KENT E. BAUER
 certify the information shown herein is true and correct.
 Signature Ground Party Chief

I. CARL R. MCMILLEN, L.S.
 certify that this Corner Record correctly represents work performed by me or under my direction in compliance with the Corner Recordation Act" (70-22-107, et seq., M.D.A.)
 Signature of Surveyor & Seal

Date: 9/84 Reg. No. 4659S
 Employer: CARL R. MCMILLEN & ASSOC.

Office of Clerk and Recorder, County of Sanders. This "corner record" was filed for record on the Sept 24 day of 1984 was noted on the cross-index plat and is assigned page No. 592 in book No. 3

Dixie Vaughn
 County Official
 Cross Index No. B-5 T. 24N R. 31W P.M.M.



• - corner this sheet