

INSTRUCTIONS

1. Original and/or subsequent record used to evaluate the corner position.
2. Description of evidence found, note discrepancies in the record, state method of establishing lost or obliterated corners.
3. Description of monument and accessories set to perpetuate the corner position.
4. Sketch of corner, show all pertinent data which can best be shown in a sketch example, corner marking, topography ties, position of accessories, etc.
5. Certification must be signed and sealed by Land Surveyor registered in the State of Montana.
6. Fill in Cross Index & Section Diagram at bottom of sheet.

CERTIFIED CORNER RECORDATION

Corner Section Corner 7/8 18/17 T. 24 N. R. 31 W. P.M.M. Sanders County

1893 GLO Record:

- Set a Granite Stone; 18x18x10 ins., 12 ins. in the ground
- 20" Tamarack N.86½ E., 61 lks.
- 22" Tamarack S.33½ E., 26 lks.
- 22" Tamarack S.67°20' W., 205 lks.
- 20" Tamarack N.83½ W., 115 lks.

Found:

Stone had been removed. Found rock mound, under N-S fence 1.5 ft. S of fence corner. Found rotted stumps at location of each bearing tree.

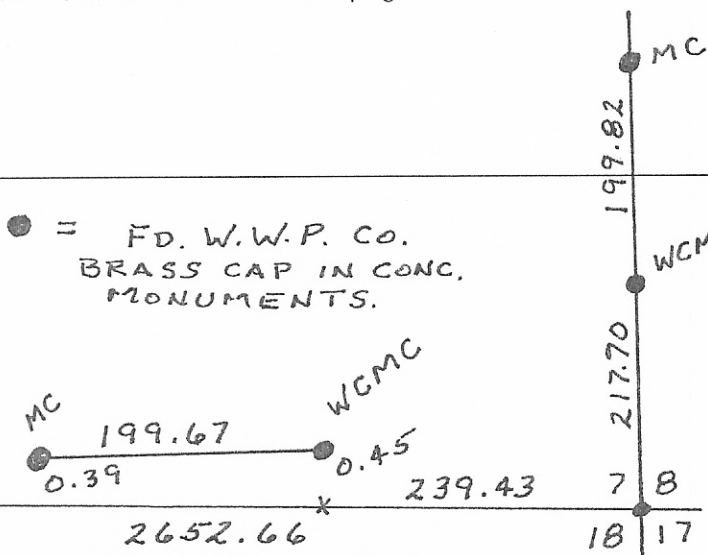
Set:

Set a 1"x48" iron pipe & cap "LS 5616" in depression where stone had been and at record distances from stumps.

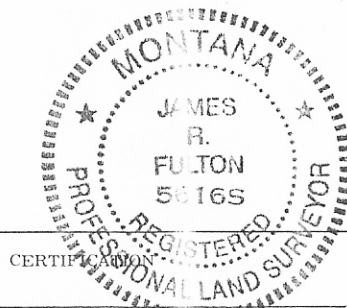
R.P.'s:

- Set nail & tag "LS5616" in:
- 14" Pine N.68 W., 16.80 ft.
- 12" Pine S.12 W., 51.00 ft.

See L.C.R. recorded on page 3-923



SKETCH OF CORNER

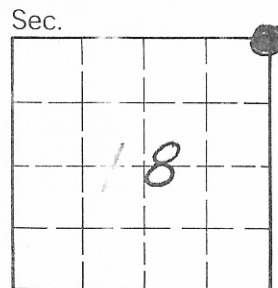


I, J Fulton
 certify the information shown herein is true and correct.
James R. Fulton
 Signature Ground Party Chief
 I, James R. Fulton
 certify that this Corner Record correctly represents work performed by me or under my direction in compliance with the "Corner Recordation Act" (70-22-101, et seq., M.C.A.)
James R. Fulton
 Signature of Surveyor & Seal
 Date: 6/26/95 Reg. No. LS 5616
 Employer: Washington Water Power Co.

Office of Clerk and Recorder, County of Sanders. This "corner record" was filed for record on July 17, 1995 at 1:35 pm was noted on the cross-index plat and is assigned page No. 216 in book No. _____

218272

Tillie Wollaston, Clerk Rec.
 County Official
 By: Roni A. Wright, Deputy
 J-5 T. 24 N. R. 31 W. P.M.M.



● - corner this sheet