

CERTIFIED CORNER RECORDATION

Corner 1/4 Sec. Cor. of Secs. S33|S34 T. 24 N. R. 31 W. P.M.M. SANDERS County

I. Record:

1893 original record by Rodney W. and Arthur Page: 40.00 chs. Set a sandstone 30x14x3 ins., 23 ins. in the ground for 1/4 Sec. Cor, marked 1/4 on W., face, from which:

- A balsam 24 ins. diam., bears S55 1/2°W, 87 lks. dist., mkd. 1/4 S BT.
- A balsam 6 ins. diam., bears N60 1/2°W, 131 lks. dist., mkd. 1/4 S BT.

1979 Certified Corner Recordation by H. G. Warren: No original record known. No evidence of original corners or accessories found. Set a 1/2 in. x 18 in. rebar with yellow cap 2734S Warren in roadway for East 1/4 corner Section 33. Corner set by proportion from GLO notes.

Aspen 4 ins. dia. bears S78°30'E, 29.2 ft. marked RM.

II. Found a 1/2 in. diam. rebar, 8 ins. below grade at the West edge of the county road.

From which:

A birch 16 ins. diam., bears S78°E, 29.2 ft. marked with a healed face.

III. Established 1 new bearing accessory.

A power pole, bears N16°W, 69.6 ft.

Painted and signed the bearing tree.

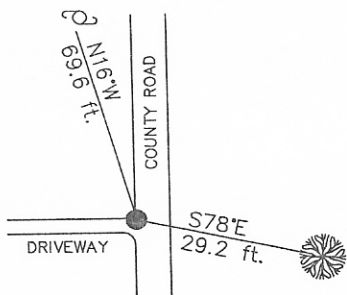
Date of Fieldwork: 11/14/2001

Survey crew: Steve Boyer, Tom Hommel

Magnetic declination: 20° East assumed

Equipment used: Hand compass and loggers tape

U.S. Forest Service, Supervisors Office, 1101 Hwy. 2 West, Libby, MT 59923 (406) 293-6211



SKETCH OF CORNER

NOT TO SCALE

CERTIFICATION

I, Steven A. Boyer 97501 certify the information shown herein is true and correct.

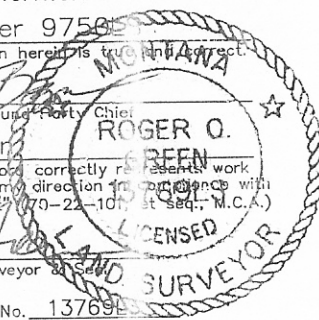
Steven A. Boyer
Signature Ground Party Chief

I, Roger O. Green certify that this Corner Record correctly represents work performed by me or under my direction in accordance with the "Corner Recordation Act" (70-23-101 et seq., M.C.A.)

Roger O. Green
Signature of Surveyor

Date: 11/14/2001 Reg. No. 13769

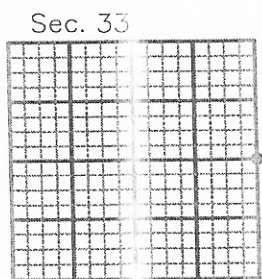
Employer: U. S. Forest Service



Office of Clerk and Recorder, County of Sanders This "corner **245520**

record" was filed for record on February 20, 2002 @ 3:45 P.M.

was noted on the cross-index plat and is assigned page No. _____, in
book No. 4 929 Pat Ingraham by: Paal Walden,
County Official Deputy



• corner this sheet

Cross Index No. X-13 T. 24N. R. 31W. P.M., MT