

CERTIFIED CORNER RECORDATION

Corner Sec. Cor. S28 | S27
of Secs. S33 | S34 T. 24 N. R. 31 W. P.M.M. SANDERS County

I. Record: 1893 original record by Rodney W. and Arthur Page: 80.00 chs. Set a post, 4 ft. long, 4 ins. square, 24 ins. in the ground for cor. to secs. 27, 28, 33 and 34, marked T24N S27 on NE, R31W S34 on SE, S33 on SW and S28 on NW faces with one notch on S and 3 notches on E edges, from which:

- A fir 9 ins. diam., bears N4 1/2°E, 55 lks. dist., mkd. T24N R31W S27 BT.
- A fir 7 ins. diam., bears S41 1/2°E, 21 lks. dist., mkd. T24N R31W S34 BT.
- A fir 10 ins. diam., bears S52 1/2°W, 33 lks. dist., mkd. T24N R31W S33 BT.
- A fir 6 ins. diam., bears N63°W, 47 lks. dist., mkd. T24N R31W S28 BT.

1978 Ninneman Field Notes, Book #271, Ed Moss, Party Chief: Book #271, page 9, on September 18th, 1972 states for the NE Sec. Cor. Sec. 33 that a "H & T by others" was found.

1978 Certified Corner Recordation by Jack W. Ninneman, 534 ES: The drawing on the back of the Corner Recordation states, "Set a steel rod from which:

- An 8" pine bears S58°E, scribed S34 BT. (sic)
- A 10" pine bears N39°E, 44.1 ft., scribed S27 BT.
- A 10" pine bears N19°30'W, 60 ft., scribed S28 BT.

All trees posted."

1978 Certificate of Survey #292 by H. Gene Warren: Found IP set by Ninneman.

1979 Certificate of Survey #364 by H. Gene Warren: Found IP set by Ninneman.

1979 Certificate of Survey #423-A by H. Gene Warren: Found pin set in road by McMillen.

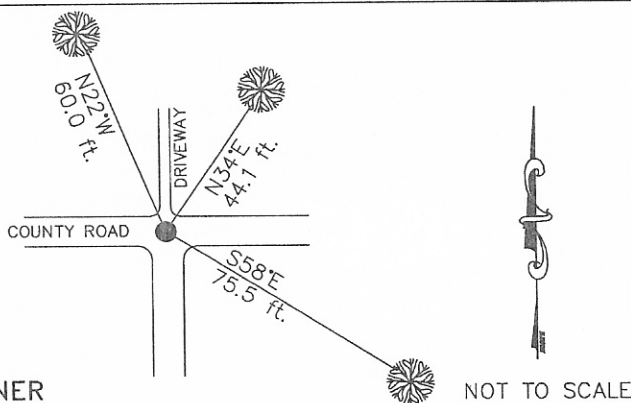
1980 Four Corners Amended Subdivision Plat by H. Gene Warren: Pin under roadway.

II. Found a 5/8 in. diam. rebar, 8 ins. below grade at the "T" intersection of 2 county roads. From which:

- A pine 24 ins. diam., bears N34°E, 44.1 ft. marked with a healed face.
- A pine 11 ins. diam., bears S58°E, 75.5 ft. marked with a pitched face.
- A pine 21 ins. diam., bears N22°W, 60.0 ft. marked with a healed face.

III. Painted and signed the bearing tree.

Date of Fieldwork: 11/14/2001
 Survey crew: Steve Boyer, Tom Hommel
 Magnetic declination: 20° East assumed
 Equipment used: Hand compass and loggers tape
 U.S. Forest Service, Supervisors Office, 1101 Hwy. 2 West, Libby, MT 59923 (406) 293-6211



SKETCH OF CORNER

NOT TO SCALE

CERTIFICATION

I, Steven A. Boyer 9758-S
 certify the information shown herein is correct

Steven A. Boyer
 Signature Ground Party Chief

I, Roger O. Green
 certify that this Corner Record correctly represents work performed by me or under my direction in compliance with the "Corner Recordation Act" (70-22-101, et seq., M.C.A.)

Roger O. Green
 Signature of Surveyor

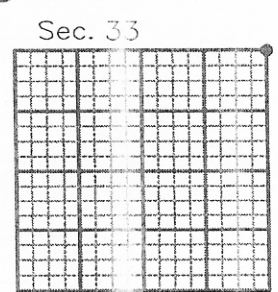
Date: 11/14/2001 Reg. No. 13769-S

Employer: U. S. Forest Service

Office of Clerk and Recorder, County of Sanders This "corner
 record" was filed for record on February 20, 2002 @ 3:42 P.M.

245519

was noted on the cross-index plat and is assigned page No. _____, in
 book No. 4 928 Pat Ingraham by: *Pat Ingraham*
 County Official *Deputy*



• corner this sheet

Cross Index No. V-13 T. 24N. R. 31W. P.M., MT
 Adopted July 1, 1981, Montana Board of Professional Engineers & Land Surveyors