

61-327158

INSTRUCTIONS

1. Original and/or subsequent record used to evaluate the corner position.
2. Description of evidence found, note discrepancies in the record, state method of establishing lost or obliterated corners.
3. Description of monument and accessories set to perpetuate the corner position
4. Sketch of corner, show all pertinent data which can best be shown in a sketch example, corner marking, topography lies, position of accessories, etc.
5. Certification must be signed and sealed by Land Surveyor registered in the State of Montana.
6. Fill in Cross Index & Section Diagram at bottom of sheet.

CERTIFIED CORNER RECORDATION

HES 756 Cor. #1

Corner 1/4 Secs. 34 35 & HES 758 Cor. #7 T. 25 N. R. 18 W. P.M.M. Lake County

RECORD 1 G.L.O. Survey by William K. Trippet, 1909.

"Set a cottonwood post, 3 ft. long, 3 ins. sq., 24 ins. in the ground, for 1/4 sec. cor., marked 1/4 S 34 on W. and 1/4 S 35 on E. face; from which

A cherry, 7 ins. diam., bears N. 75° E., 19 lks. dist., marked 1/4 S 35 B T.

A spruce, 7 ins. diam., bears N. 16° W., 63 lks. dist., marked 1/4 S 34 B T."

RECORD 2 H.E.S. Survey 754 by H.C. Kuhl, September 19, 1917.

"...I find the above described post for the 1/4 Sec. Cor. bet. Secs. 34 and 35, rotted and broken off above ground, with stump still in ground. Therefore set in place, thereof, for the 1/4 Sec. Cor. of Secs. 34 and 35, a small stone, marked with a cross (x), under a General Land Office iron post 1 inch dia., 36 ins. long, 24 ins. in the ground, with a brass cap marked 1917; S34 1/4 on the W. half and S 35 on the east half."

RECORD 3 H.E.S. Survey 756 by H.C. Kuhl, October 3, 1917.

RECORD 4 H.E.S. Survey 758 by R. E. Maurer, 1918.

RECORD 5 G.L.O. Resurvey by Lyman and Inch, 1935.

"Point 14 lks. W. of the 1/4 sec. cor., identical with Cor. No. 1, of H.E.S. No. 756, and Cor. No. 7, of H.E.S. No. 758, which is an iron post, 1 in. diam., 12 ins. above ground, marked and witnessed as described in the official record, except that the northeast bearing tree has fallen. I mark a new bearing tree as follows:

A fir, 7 ins. diam., bears N. 63° 30' E., 35 lks. dist., marked 1/4 S 35 B T."

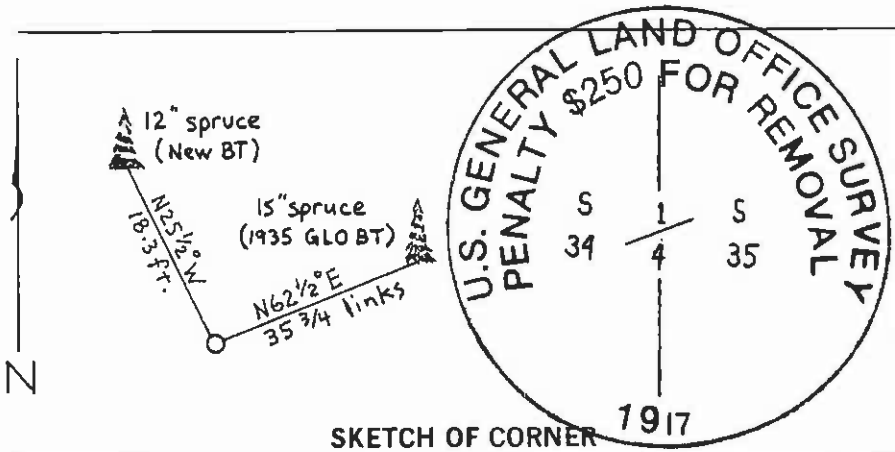
FOUND A firmly set 1 in. diameter iron pipe with a 2 1/2 in. diameter G.L.O. brass cap, projecting 15 inches above the ground and marked as shown from which;

A spruce, 15 ins. diam., bears N. 62 1/2° E., 35 3/4 lks. distant with a completely overgrown face. (1935 Resurvey BT)

No evidence of the other bearing trees, pits, mounds, or stakes.

SET We accept the G.L.O. monument for the 1/4 corner common to sections 34 and 35 and establish the following bearing tree:

(over)



CERTIFICATION

I, Ron Krueger
 certify the information shown herein is true and correct.

Ron Krueger
 Signature Ground Party Chief

I, Daniel G. Smiley
 certify that this Corner Record correctly represents work performed by me or under my direction in compliance with the "Corner Recordation Act" (70-22-101, et seq., M.C.A.)

Daniel G. Smiley
 Signature of Surveyor & Seal

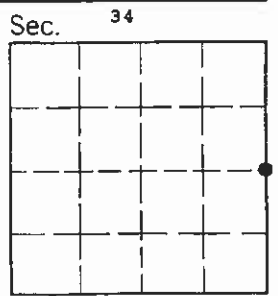
Date 3/26/92 Reg. No. 3526ES
 U.S. FOREST SERVICE
 Employer.

Office of Clerk and Recorder, County of Lake. This "corner record" was filed for record on MAR 31 '92 8:35 AM

was noted on the cross-index plat and is assigned microfiles, in 327158 RUTH E. HODGES Paula A. Holle County Official Deputy

C-1879

Cross Index No. X-17 T. 25 N. R. 18 W. P.M.M.



• - corner this sheet

337158

An Engleman spruce, 12 inches dbh, bears N.25 1/2^o W., 18.3 feet distant, blazed and scribed "1/4 S34 BT."

Measurements were made with a staff compass (declination 17 1/2^o E.) and a steel tape to the center of the root crowns of all trees. Distances are horizontal.

We attached "BT" and "LAND SURVEY MONUMENT" signs to the BT's.