

Lake Co.

61-265214

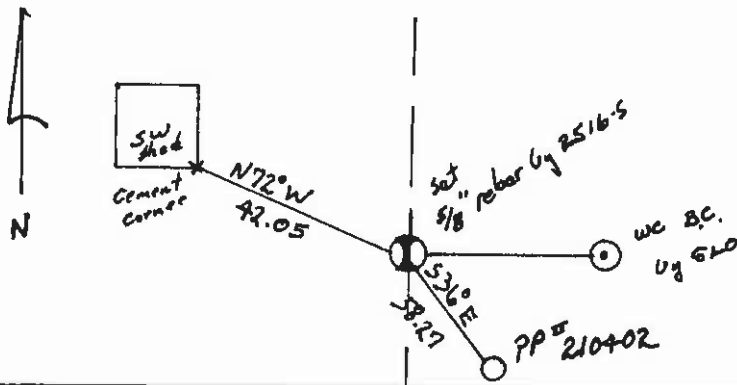
CERTIFIED LAND CORNER RECORDATION

DESCRIPTION OF CORNER EVIDENCE FOUND, AND ORIGINAL RECORD (IF KNOWN)

FD Witness Corner B.C. by GLO
Set 5/8" Rebar by 2516.5

DESCRIPTION OF MONUMENT AND ACCESSORIES ESTABLISHED TO PERPETUATE THE ORIGINAL LOCATION OF THIS CORNER:

Date of work: 5/81



SKETCH, WITH COURSE AND DISTANCE TO ADJACENT CORNERS IF DETERMINED IN THIS SURVEY. (MAY SKETCH OR PASTE REPRODUCTION ON REVERSE SIDE.)

see reverse side.

DIAGRAM OF CORNER:

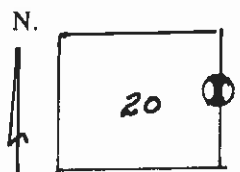
Surveyor's Seal

I, Bryan Black
certify that the information shown herein is true and correct.

Bryan Black
Signature of Ground Party Chief

I, C. W. Doyle
certify that I have carefully performed or reviewed the work done on the diagrammed corner as reported on this recordation form and approve the same.

C. W. Doyle
Signature of Surveyor



⊙ = Corner recorded on the sheet

2516.5
Registration Number

Office of Clerk and Recorder, County of Lake, State of Montana

This "corner record" was filed for record on the 14th day of December, 1981, at 11:27 O'Clock A.M.
assigned MICRO. 265214 in book No. C-1164.
ETHEL M. HARDING, Clerk and Recorder
BY: Xyenne Hartsch, Deputy
County Official

Cross Index No. F-9 T 25N R 19W Mer.

