

CERTIFIED LAND CORNER RECORDATION

DESCRIPTION OF CORNER EVIDENCE FOUND, AND ORIGINAL RECORD (IF KNOWN)

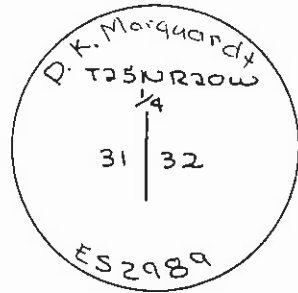
Original Record- Set a trap rock - 18"x9"x5" - 12" in ground - marked 1/4 on west face from which:
A 12" pine bears N. 68° E. 168 lks
A 12" pine bears N. 83°45' E. 174 lks

Nothing found

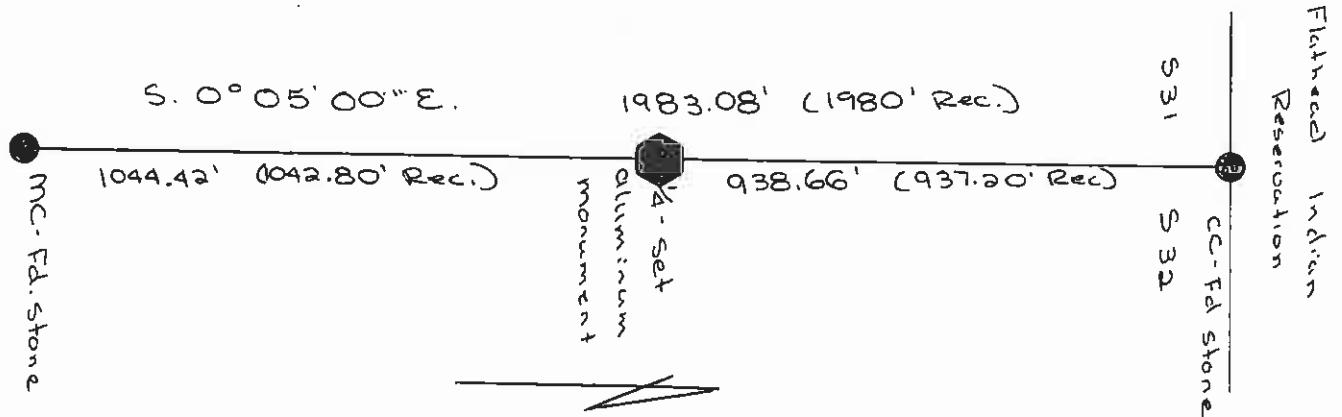
DESCRIPTION OF MONUMENT AND ACCESSORIES ESTABLISHED TO PERPETUATE THE ORIGINAL LOCATION OF THIS CORNER:

Date of work: April, 1972

Set aluminum monument stamped:
Set by single proportion between closing corner on the South line of the Flathead Indian Reservation Boundary & the Meander Corner



SKETCH, WITH COURSE AND DISTANCE TO ADJACENT CORNERS IF DETERMINED IN THIS SURVEY. (MAY SKETCH OR PASTE REPRODUCTION ON REVERSE SIDE.)



Surveyor's Seal



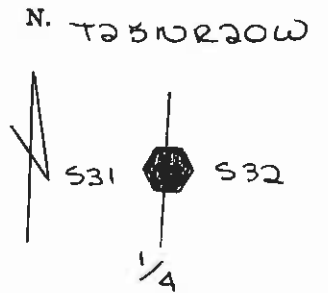
I, Sherman D. Marquardt certify that the information shown herein is true and correct.

Signature of Sherman D. Marquardt, Signature of Ground Party Chief

I, D. K. Marquardt certify that I have carefully performed or reviewed the work done on the diagrammed corner as reported on this recordation form and approve the same.

Signature of D. K. Marquardt, Signature of Surveyor

DIAGRAM OF CORNER:



Corner recorded on the sheet

ES2989 Registration Number

Office of Clerk and Recorder, County of Lake, State of Montana
is "corner record" was filed for record on the 25th day of JUNE 1979 at 9:20 o'clock A. M.
signed Miss No. 248971 in book No. C-879
Ethel M. Harding, Lake County Clerk & Recorder
County Official By G. Wilton, Deputy
Cross Index No. X-5 T. 25 N. R. 20 W Mer.