

CERTIFIED LAND CORNER RECORDATION

DESCRIPTION OF CORNER EVIDENCE FOUND, AND ORIGINAL RECORD (IF KNOWN)

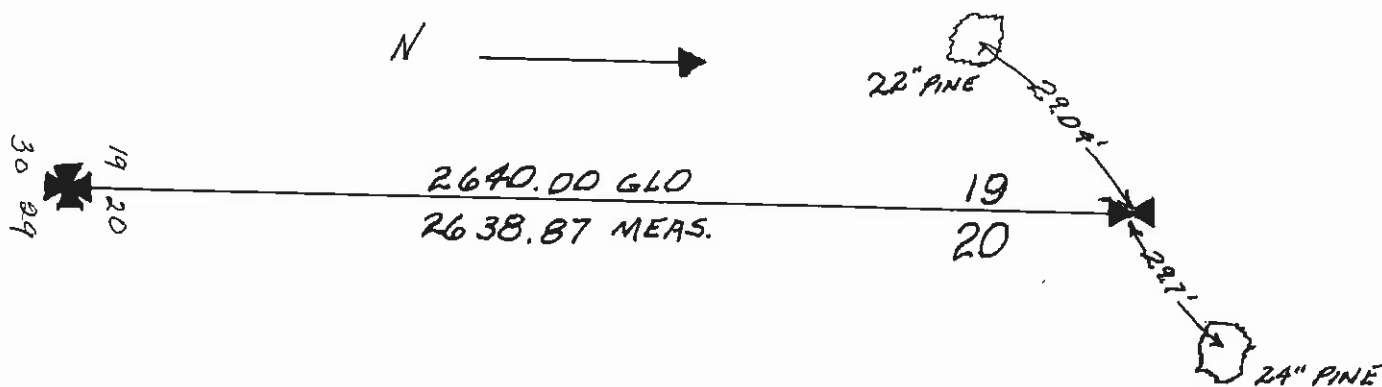
Found: Original stone marked 1/4 on W face firmly set with a 1 1/2" pipe driven alongside with a brass cap set by a registered surveyor. A pine 24 inches diam. bearing N67°E distinctively inscribed. A pine 22 inches diam. bearing S41°W distinctively inscribed.

Original: Set a limestone 12x12x7 ins. 8/16 ins. in the ground marked 1/4 on W face from which: A pine 12 ins. diam. bears N 67°E 44 lks. dist. marked 1/4 S BT A pine 12 ins. diam. bears S41°W 45 lks. dist. marked 1/4 S BT

DESCRIPTION OF MONUMENT AND ACCESSORIES ESTABLISHED TO PERPETUATE THE ORIGINAL LOCATION OF THIS CORNER:

Date of work: 1978

SKETCH, WITH COURSE AND DISTANCE TO ADJACENT CORNERS IF DETERMINED IN THIS SURVEY. (MAY SKETCH OR PASTE REPRODUCTION ON REVERSE SIDE.)



Surveyor's Seal

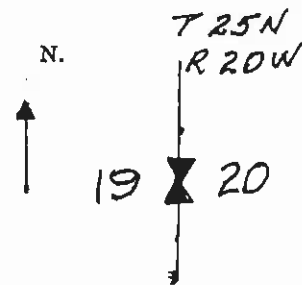
I, _____ certify that the information shown herein is true and correct.

Ray M. Mearns M.D.H. Signature of Ground Party Chief

I, _____ certify that I have carefully performed or reviewed the work done on the diagrammed corner as reported on this recordation form and approve the same.

Signature of Surveyor

DIAGRAM OF CORNER:



⊗ = Corner recorded on the sheet

Registration Number

Office of Clerk and Recorder, County of Lake, State of Montana

This "corner record" was filed for record on the 26th day of OCTOBER 1979 at 9:28 o'clock A.M.

Witnessed by Ethel M. Harding, Lake County Clerk & Recorder signed No. 251392, in book No. C-911. By _____ Deputy County Official

Form 125 - 45227 Cross Index No. P-5 T. 25-20 R. Mer.