

CERTIFIED LAND CORNER RECORDATION

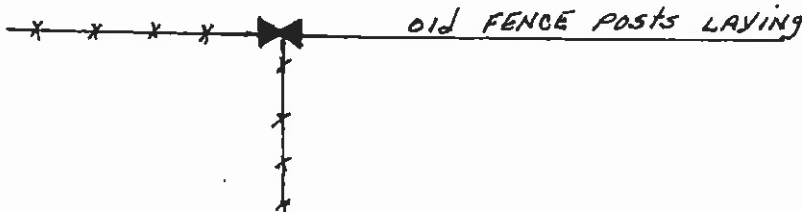
DESCRIPTION OF CORNER EVIDENCE FOUND, AND ORIGINAL RECORD (IF KNOWN)

Found: 5/8" iron pin with brass cap 6" above ground marked $\frac{1}{4}$ 20 | 21
set by 2343S

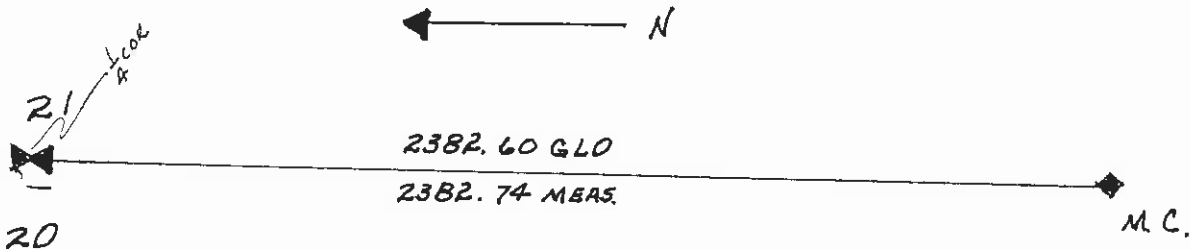
Original: Set a limestone 12x10x5 ins. m 8 ins., in the ground, marked $\frac{1}{4}$ on W face from which:
A pine 16 ins. diam. bears S52 $\frac{1}{2}$ °E 92 lks. dist. marked $\frac{1}{4}$ SBT.
A pine 13 ins. diam. bears N40 $\frac{1}{2}$ °W 90 lks. dist. marked $\frac{1}{4}$ SBT.

DESCRIPTION OF MONUMENT AND ACCESSORIES ESTABLISHED TO PERPETUATE THE ORIGINAL LOCATION OF THIS CORNER:

Date of work: 1978



SKETCH, WITH COURSE AND DISTANCE TO ADJACENT CORNERS IF DETERMINED IN THIS SURVEY. (MAY SKETCH OR PASTE REPRODUCTION ON REVERSE SIDE.)



Surveyor's Seal

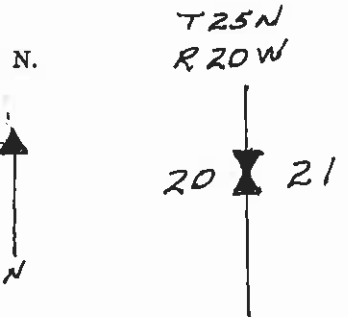
I, _____ certify that the information shown herein is true and correct.

Ray Munnery M.D.O.H.
Signature of Ground Party Chief

I, _____ certify that I have carefully performed or reviewed the work done on the diagrammed corner as reported on this recordation form and approve the same.

Signature of Surveyor

DIAGRAM OF CORNER:



☒ = Corner recorded on the sheet

Registration Number

Office of Clerk and Recorder, County of Lake, State of Montana

This "corner record" was filed for record on the 26th day of OCTOBER 1979 at 9:32 o'clock A.M.

Witnessed and signed by Ethel M. Harding, Lake County Clerk & Recorder
By: *Barbara L. Wilson* Deputy County Official

Form 125 - 45227 Cross Index No. P-9 T. 25 R. 20 Mer.

SEC 20 & 21