

61-251400

CERTIFIED LAND CORNER RECORDATION

DESCRIPTION OF CORNER EVIDENCE FOUND, AND ORIGINAL RECORD (IF KNOWN)

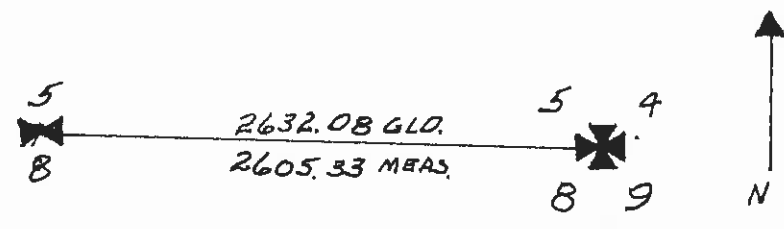
Found: A 2½ inch pipe in place 12 inches above ground with a rotted 4x4 inch post laying next to the iron pipe.
 A rotted stump N12°E

Original: Set a post 4 ft. long, 4 ins. square, 24 ins. in the ground, marked T25N S4 on NE., R20W S9 on SE., S8 on SW., and S5 on NW. faces, with 5 notches on S and 4 notches on E, edges., from which:
 A tamarack 7 ins. diam. bears N12°E 15 lks dist. marked T25N R20W S4BT.
 A fir 8 ins. diam. bears S29°E 25 lks. dist. marked T25N R20W S9BT.
 A tamarack 7 ins. diam. bears S53W 20 lks. dist. marked T25N R20W S8BT.
 A tamarack 8 ins. diam. bears N59½°W 53 lks. dist. marked T25N R20W S5BT.

DESCRIPTION OF MONUMENT AND ACCESSORIES ESTABLISHED TO PERPETUATE THE ORIGINAL LOCATION OF THIS CORNER:

Date of work: 1978

SKETCH, WITH COURSE AND DISTANCE TO ADJACENT CORNERS IF DETERMINED IN THIS SURVEY. (MAY SKETCH OR PASTE REPRODUCTION ON REVERSE SIDE.)



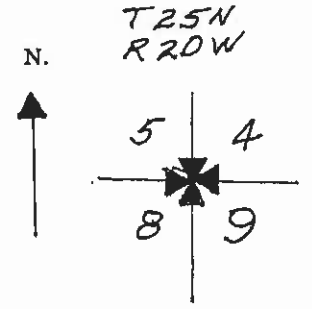
Surveyor's Seal

I,
 certify that the information shown herein is true and correct.
Ray Munsergi M.D.C.H.
 Signature of Ground Party Chief

I,
 certify that I have carefully performed or reviewed the work done on the diagrammed corner as reported on this recordation form and approve the same.

.....
Signature of Surveyor

DIAGRAM OF CORNER:



✱ = Corner recorded on the sheet

.....
Registration Number

Office of Clerk and Recorder, County of Lake, State of Montana

This "corner record" was filed for record on the 26th day of OCTOBER 1979, at 9:44 o'clock A.M. and is assigned 251400 in book No. C-919 by Ethel M. Harding, Lake County Clerk & Recorder, County Official.

Cross Index No. E-9 T. 25 R. 20 Mer.

SEC 5, 8, 9 & 4