

- INSTRUCTIONS**
1. Original and/or subsequent record used to evaluate the corner position.
 2. Description of evidence found, note discrepancies in the record, state method of establishing lost or obliterated corners.
 3. Description of monument and accessories set to perpetuate the corner position.
 4. Sketch of corner, show all pertinent data which can best be shown in a sketch example, corner marking, topography ties, position of accessories, etc.
 5. Certification must be signed and sealed by Land Surveyor registered in the State of Montana.
 6. Fill in Cross Index & Section Diagram at bottom of sheet.

CERTIFIED CORNER RECORDATION

Corner Secs. 13, 18, 19 & 24 T. 25 N. R. 21&22 W. Lake County

RECORD: from G.L.O. Field Book 2672, page 6, surveyed by Newton Orr in June 1892

Set a post 4' long, 4" square, from which:

- a 18" fir bears N20°E 56 lks. (33.6')
- a 7" fir bears S50°30'E 81 lks. (53.5')
- a 10" fir bears S78°30'W 64 lks. (42.2')
- a 18" fir bears N55°W 74 lks. (48.8')

- A found 5/8" rebar w/Medland cap shown on COS 4194
- A found iron pin 34.88' south of centerline Hwy 352, per MDOT R/W plans FAS RS-DP-448(3)

FOUND:

- A plain 5/8" rebar, all original BTs destroyed.
- a Medland nail and disc in top center of farthest west hwy. gaurd rail post bears N11°E 12.09'

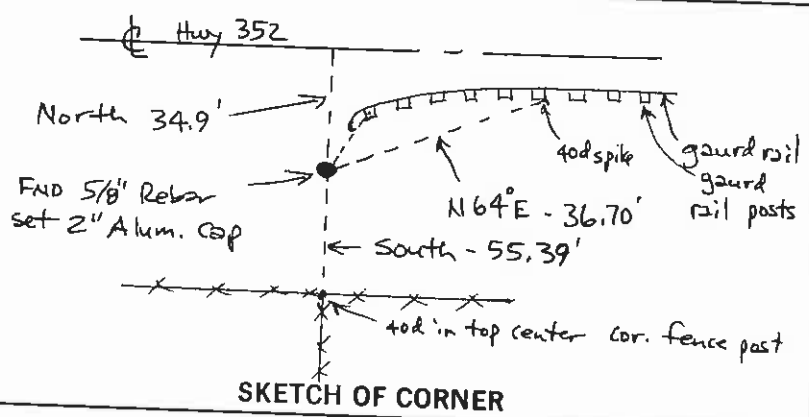
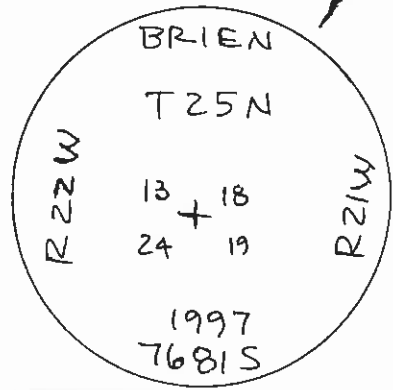
SET:

Accepted position of 5/8" rebar as section corner, set a 2" alum. cap on top of found rebar marked as shown below, from which:

- a 40d spike up 0.2' in SE cor. of 6th gaurd rail post from the west bears N64°E 36.70'
- a 40d spike in top center of 6" corner fence post bears South 55.39'
- centerline stripe of Hwy. 352 bears North 34.9'

Used a SILVA hand compass (declination 18° E)

See C.O.S. 5336



CERTIFICATION

I, Daniel P. Brien **MONTANA**
 certify the information shown herein is true and correct.

Signature Ground Party Chief Daniel P. Brien

I, Jean P. Orr
 certify that this Corner Record correctly represents work performed by me or under my direction in compliance with the "Corner Recordation Act" (70-22-101, et seq., M.C.A.)

Signature of Surveyor & Seal Jean P. Orr

Date 6/1/97 Reg. No. 7681 S

Employer: Herbman Land Survey

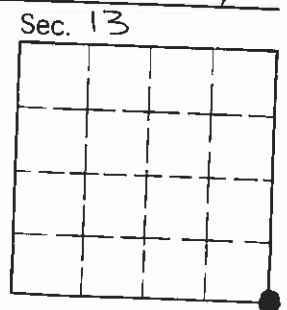
Office of Clerk and Recorder, County of LAKE. This "corner record" was filed for record on JUL 17 1997 3:45 p. m. was noted on the cross-index plat and is assigned

383274

RUTH E. HODGES

County Official

Cross Index No. N-25 25N 22W
N-1 T. 25N R. 21W P.M.M.



2-2139